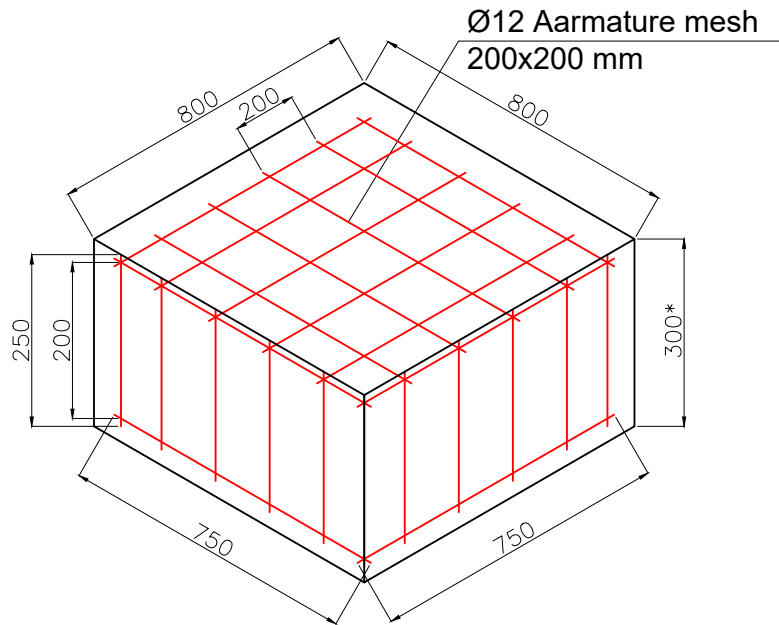


Foundation for DN300 and DN100 valves



Note: The contractor shall ensure purchase and installation of all materials and equipment envisaged by the project and which will not be handovered to contractor by GOGC

Materials	Intermediate post	Corner post	Door post	Gate post	Door	Gate	Quantity	Unit
	8 pcs	4 pcs	1 pcs	0 pcs	1 pcs	0 pcs		
	Material for one unit							
Pipe 159x6	-----	-----	-----	0.00	-----	-----	0.00	m
Pipe 159x6	-----	-----	3.60	-----	-----	-----	3.60	m
Steel square pipe 60x60x5	3.10	-----	-----	-----	7.30	0.00	32.10	m
Steel square pipe 40x40x5	-----	-----	-----	-----	1.00	0.00	1.00	m
Steel square pipe 60x60x5	-----	3.10	-----	-----	-----	-----	12.40	m
Angle bar 60x60x5	1.70	7.70	4.70	0.00	-----	-----	49.10	m
Steel line 50x5	-----	1.20	0.60	0.00	-----	-----	5.40	m
Steel line 25x5	2.40	9.60	4.80	0.00	-----	-----	62.40	m
Steel sheet 5	-----	-----	-----	-----	0.03	0.00	0.03	m²
Bolt Ø8	5	8	4	0.00	-----	-----	76	pcs
Nut Ø8	5	8	4	0	-----	-----	76	pcs
Washer Ø8	5	8	4	0	-----	-----	76	pcs
Eye bolt	-----	8	4	0.00	-----	-----	36	pcs
Loop, see the drawing	-----	-----	-----	-----	3	0	3	pcs
Helixx shaped barbed wire AKJI 600 Ø3	34.6 m perimeter						459	m
Welded mesh Ø3 (Cell min: 50x50; max: 50x100)	80.64				2.40	0.00	83	m²
Mesh fixing parts (Angle bar 50x50x5, L=150)	44 pcs				-----	-----	7	m
Bolt Ø8	88 pcs				-----	-----	88	pcs
Nut Ø8	88 pcs				-----	-----	88	pcs
Washer Ø8	88 pcs				-----	-----	88	pcs
Dowels Ø8	176 pcs				-----	-----	176	pcs
Barbed wire Ø3	-----				3	0	3	m
Wire Ø3	33.6 m						336	m
Connection wire Ø1.6	33.60				-----	-----	45	m
Concrete B25 (Base foundation)	0.008	0.008	0.008	0.000	-----	-----	0.10	m³
Concrete B25 (Foundation of support)	-----	0.050	0.050	0.000	-----	-----	0.25	m³
Shingle 20- 40	73 m²						7.30	m³
Sand	73 m²						7.30	m³
Polyethylene coating	73 m²						73.00	m²
Materials	Stripe foundation 200x500		Foundation for valve DN300 800x800x300		Foundation for valve DN100 800x800x300		Quantity	Unit
			1 pcs		3 pcs			
	Material for one unit							
Armature Ø12	217		20		20		297	m
Rod iron Ø5	30		-----		-----		30.00	m
Connection wire Ø1.6, L=150 ðð	20		-----		-----		20.00	m
Concrete B25	3.6		0.2		0.2		4	m³

All components of fencing must to be covered by zinc;

*- Sizes are approximated and they will be corrected during construction period;

Gravel (thickness - 100 mm; size 20-40 mm) to be spread on the whole area.

Approved by	T. Javakhishvili	 <p>საბავთეპროექტის ნაპროექტის და ბავთის კორპორაცია Georgian Oil & Gas Corporation</p>	Adigeni - Goderdzi Gas Main Pipeline Construction Project		
Designed by	T. Mrevlishvili		DN300 valve with single venting. Valve node fencing foundation and fence off elements in the deployment scheme		
Drawn by	S. Kirakosovi		DCC NUMBER:		
REV.	A01	C01	No: ADGO33-GS03-PL-DTL-00002		
თარიღი/DATE	06/12/18	21/01/19	SCALE:		
			SHEET No. 00002 N° REV. C01		

FILESERVER\DMIS\PROJECTS\SO\TH\ADGO33-GS03-PL-DTL-00002_C01.DWG TMOCT Feb 01, 2019-1:29pm

შპს ბავთი / PAPER SIZE: ISO A3