

TECHNICAL SPECIFICATIONS OF THE CONTAINER

Type №	5	Wash sink
Number	2	Unit

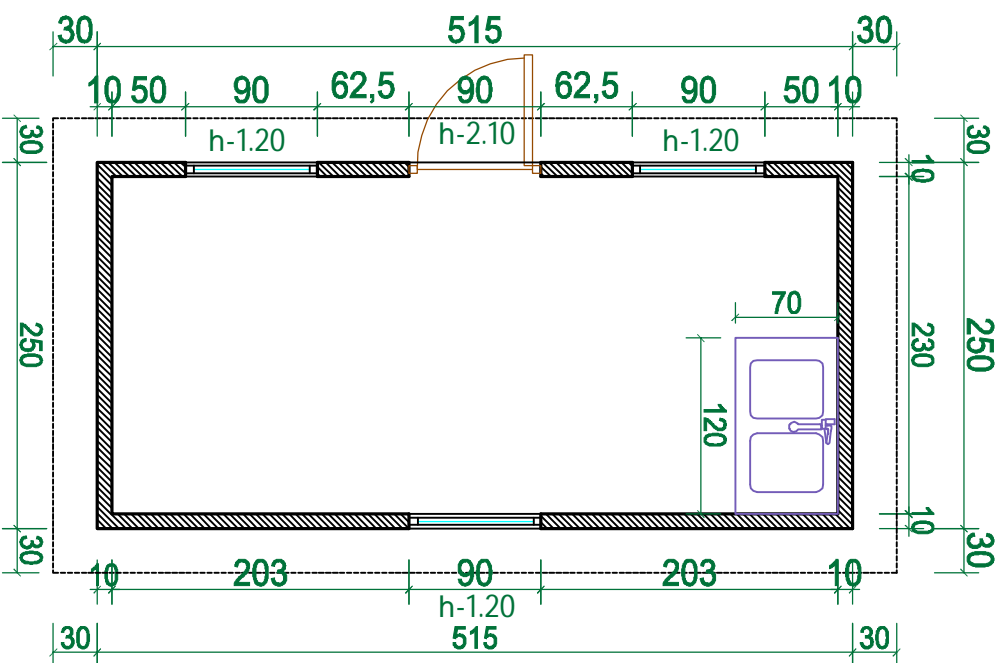
overall size	Length n M	Width in M	Height in M
	5.15	2.5	2.5 - 2.7

1	Description of booth and inner specifications	<ol style="list-style-type: none"> 1. The booth is to be transported in built-up condition (minimum 15 relocations). 2. Outer walls and the roof of the booth are to be made of sandwich panels (10 cm in width) according to the drawing polystyrene or polyurethane thermal protection (painted tin plates from inside and outside). 3. Linoleum on the floor and plastic skirting boards. 4. Double leaf door with the metal sheets (15 mm in width). 5. Metal-plastic windows with the hang-out mechanism and grid for protection from insects.
2	Characteristics of el.equipment and accessories	<ol style="list-style-type: none"> 1. Electricity is to be distributed from central electric shield with the el.switches (on surface) of the relevant power. 2. Cables should be gathered in plastic cable hangers of relevant parameters. 3. 4 socket plugs (with earthing system and surface box). 4. 2 switches (with single button, surface box). 5. 4 hermetic lamps (60 watt bulbs). 6. Cables should be made of copper
3	Water supply. Specifications of sewage facilities	<ol style="list-style-type: none"> 1. Rustless metal 2 section vessel for washing plates with siphon and mixing valve at steel construction.

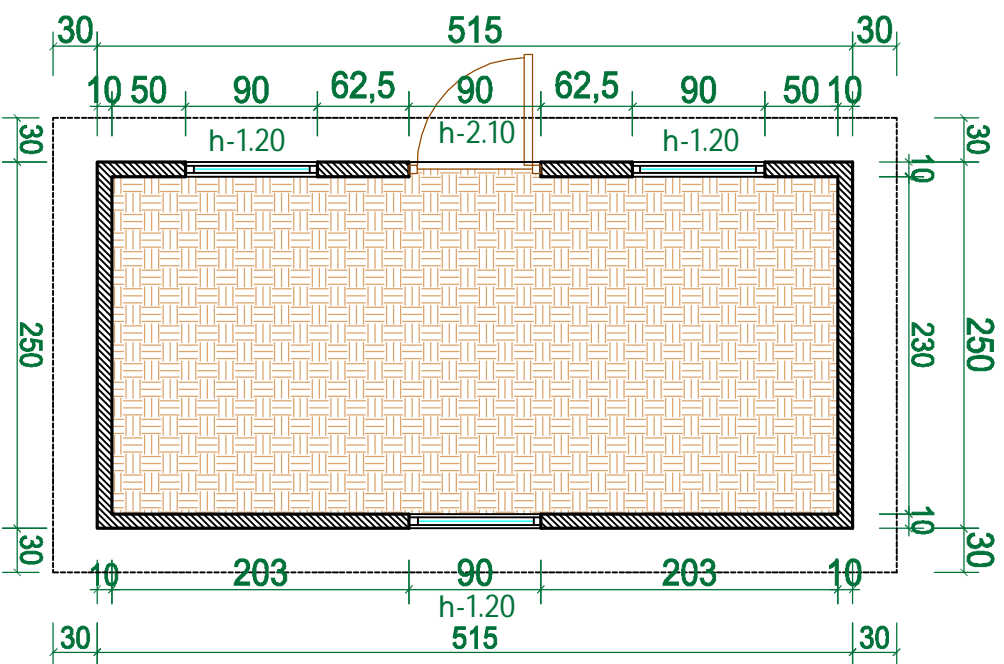
V type sandwich panel booth

Scale 1:50

Format A-4



Plan and scheme of furniture placing

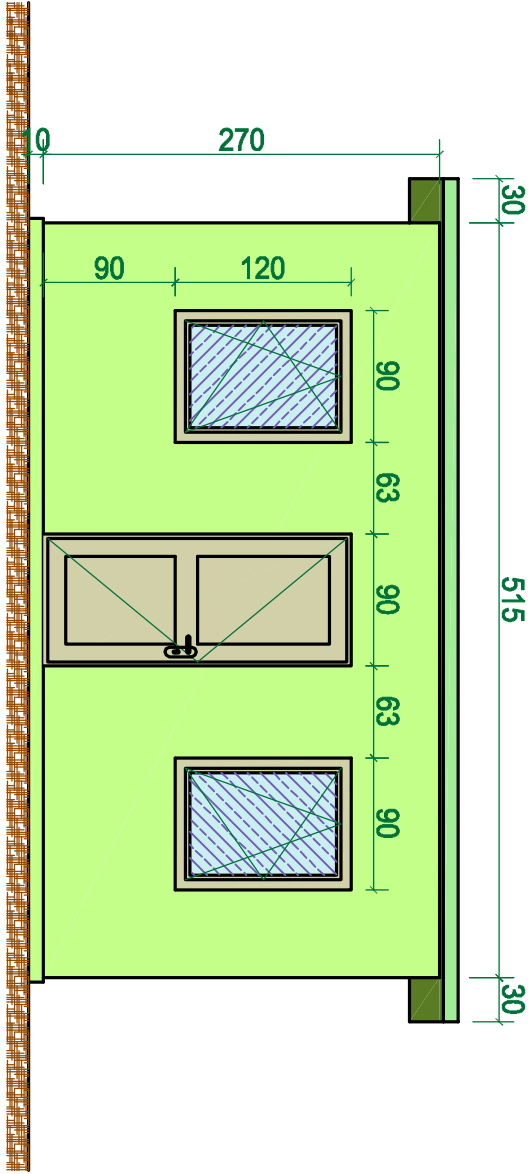
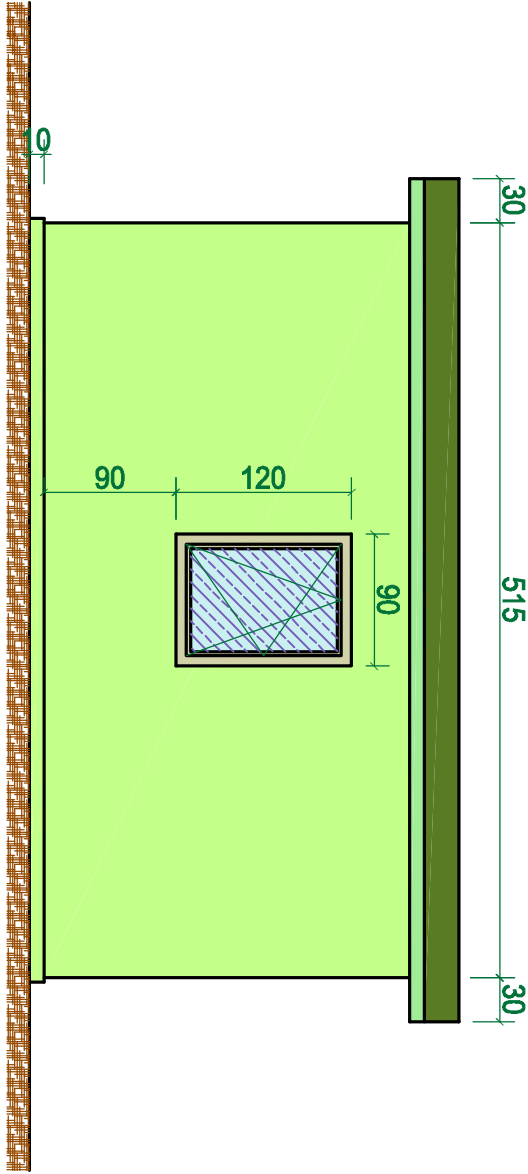


V type sandwich panel booth

Façade

Scale 1:50

Format A-4



V type sandwich panel booth

Scale 1:50

Format A-4

Façade

