

TECHNICAL SPECIFICATIONS OF THE CONTAINER

Type №	4	Wash sink
Number	12	Unit

overall size	Length n M	Width in M	Height in M
	5.15	2.5	2.5 - 2.7

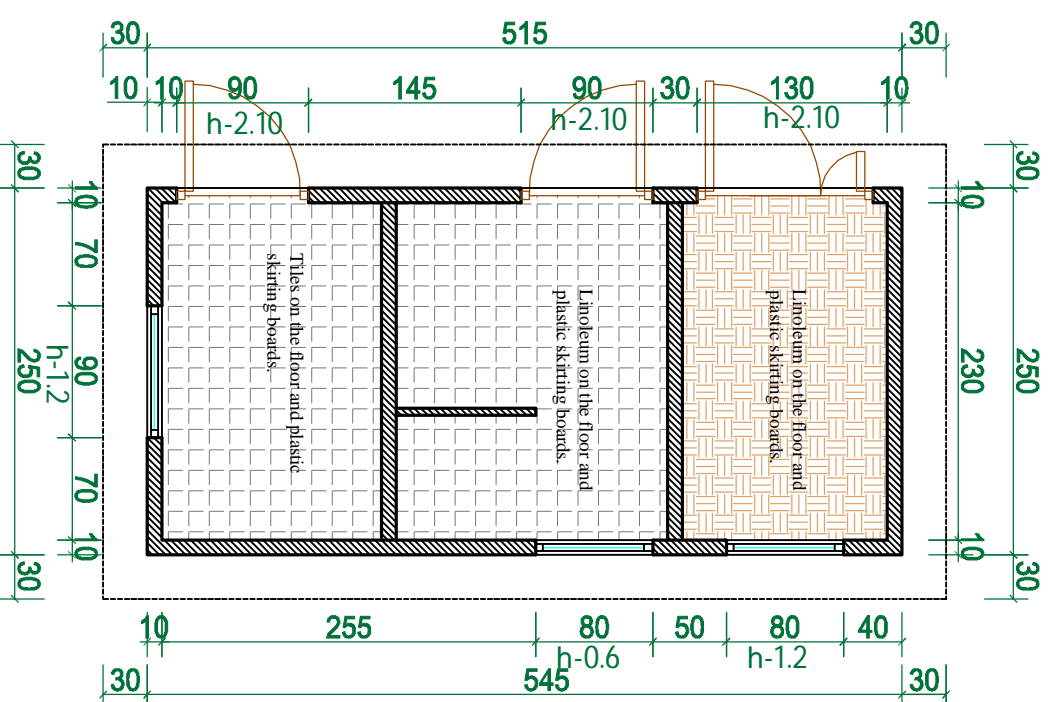
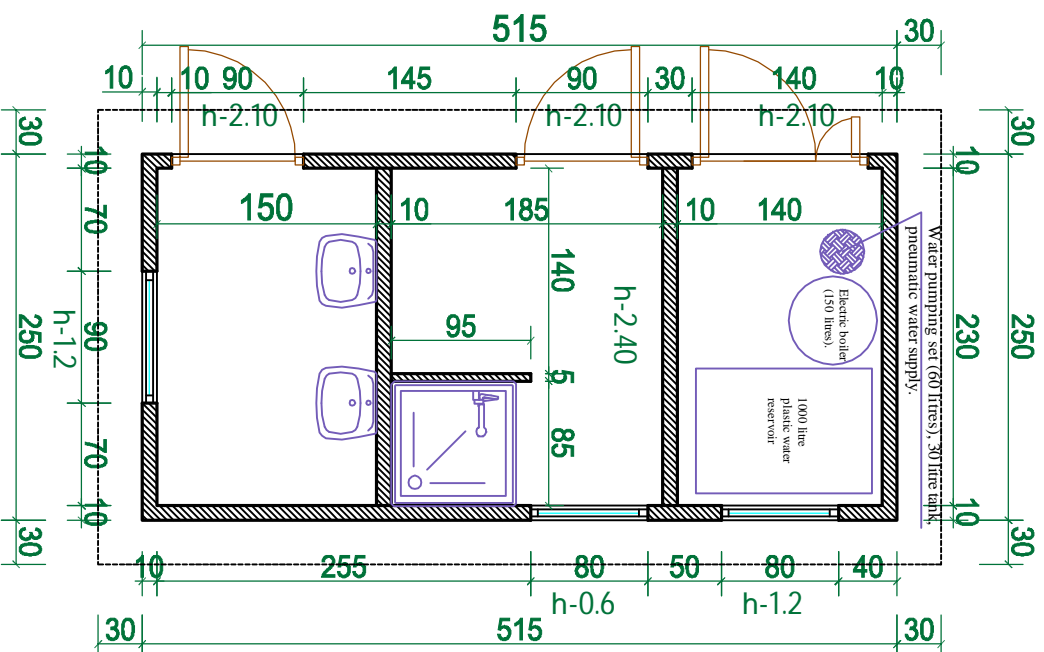
1	Description of booth and inner specifications	<ol style="list-style-type: none"> 1. The booth is to be transported in built-up condition (minimum 15 relocations). 2. Outer walls and the roof of the booth are to be made of sandwich panels (10 cm in width) according to the drawing polystyrene or polyurethane thermal protection (painted tin plates from inside and outside). 3. Linoleum on the floor and plastic skirting boards. 4. Double leaf door with the metal sheets (15 mm in width). 5. Metal-plastic windows.
2	Characteristics of el.equipment and accessories	<ol style="list-style-type: none"> 1. Electricity is to be distributed from central electric shield with the el.switches (on surface) of the relevant power. 2. Cables should be gathered in plastic cable hangers of relevant parameters. 3. Electric boiler (150 litres). 4. Water pumping set (60 litres), 30 litre tank, pneumatic water supply. 5. 10 socket plugs (with earthing system and surface box). 6. 3 switches (with single button, surface box). 7. 5 hermetic lamps (60 watt bulbs). 8. Cables should be made of copper
3	Water supply. Specifications of sewage facilities	<ol style="list-style-type: none"> 1. 1000 litre plastic water reservoir with overfall pipe, water supply and floater mechanism. 2. Water is to be supplied through plastic pipes. 3. One shower with steel cabin and oil cloth, shower mixer with a stationary shower pipe. 4. Footed ceramic sink, siphon and mixing valve. 5. Two mirrors (80x80x0.4 cm) nearby sinks.

IV type sandwich panel booth

Scale 1:50

Format A-4

Plan and scheme of furniture placing

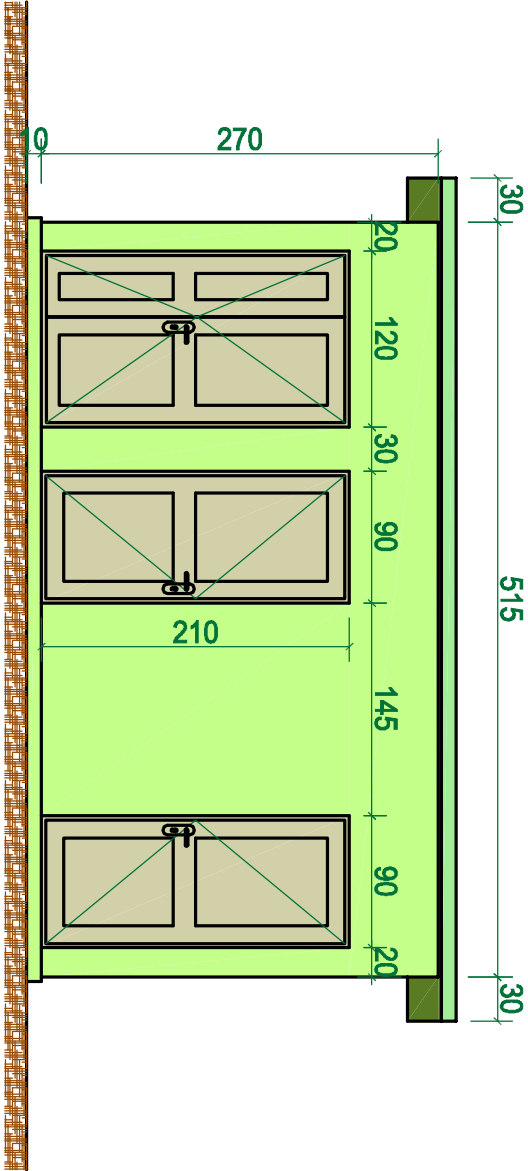
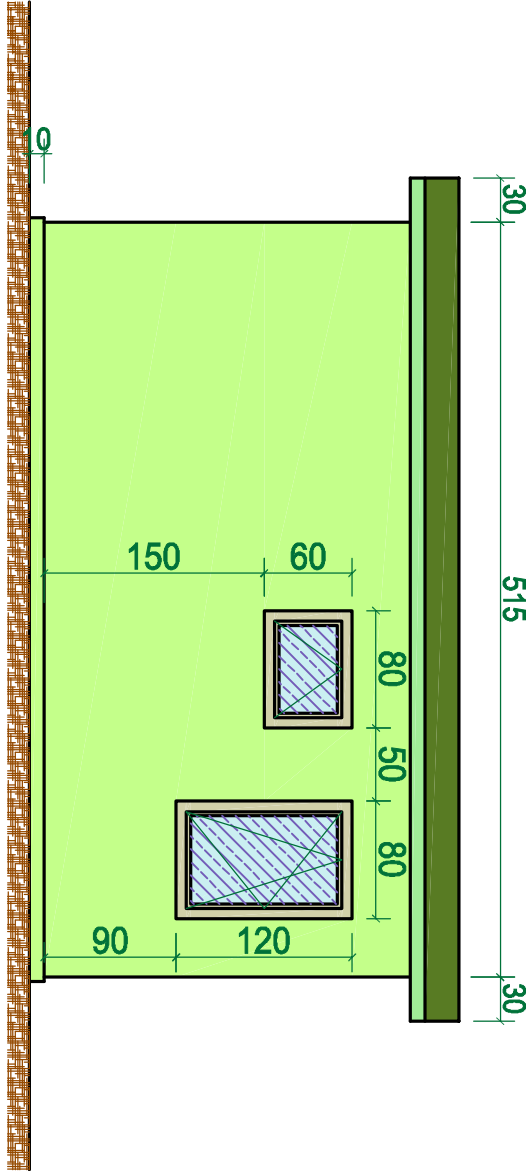


IV type sandwich panel booth

Façade

Scale 1:50

Format A-4



IV type sandwich panel booth

Scale 1:50

Format A-4

Façade

