

TECHNICAL SPECIFICATIONS OF THE CONTAINER

Type №	2	Military barrack
Number	2	Unit

overall size	Length n M	Width in M	Height in M
	8.2	3.2	2.5 - 2.7

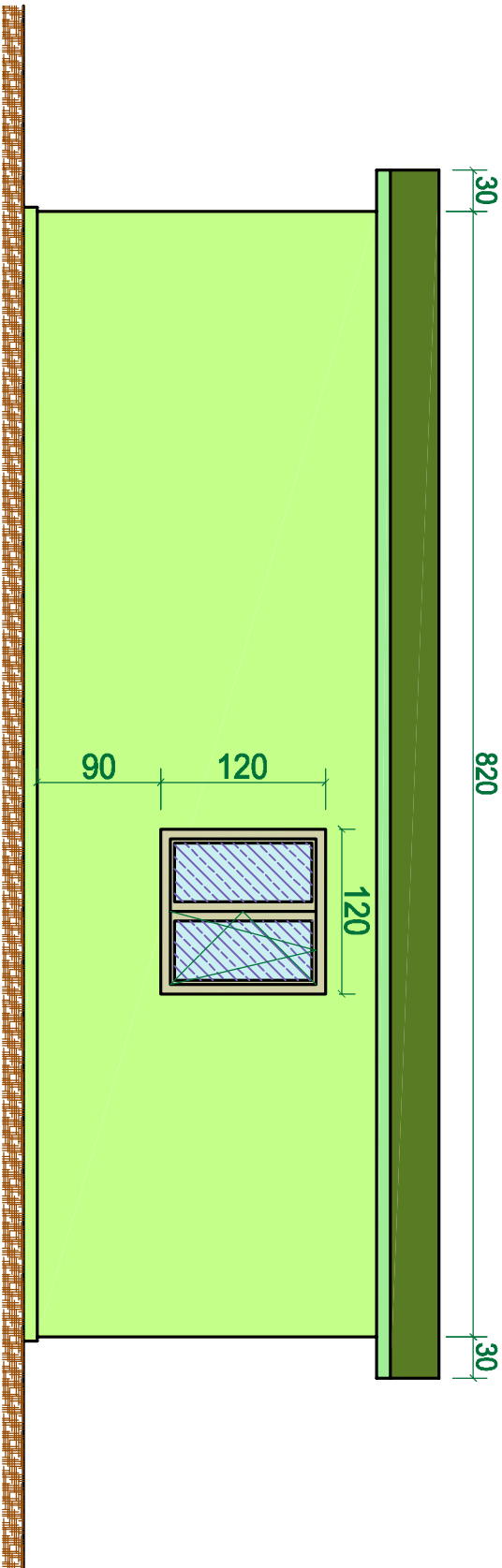
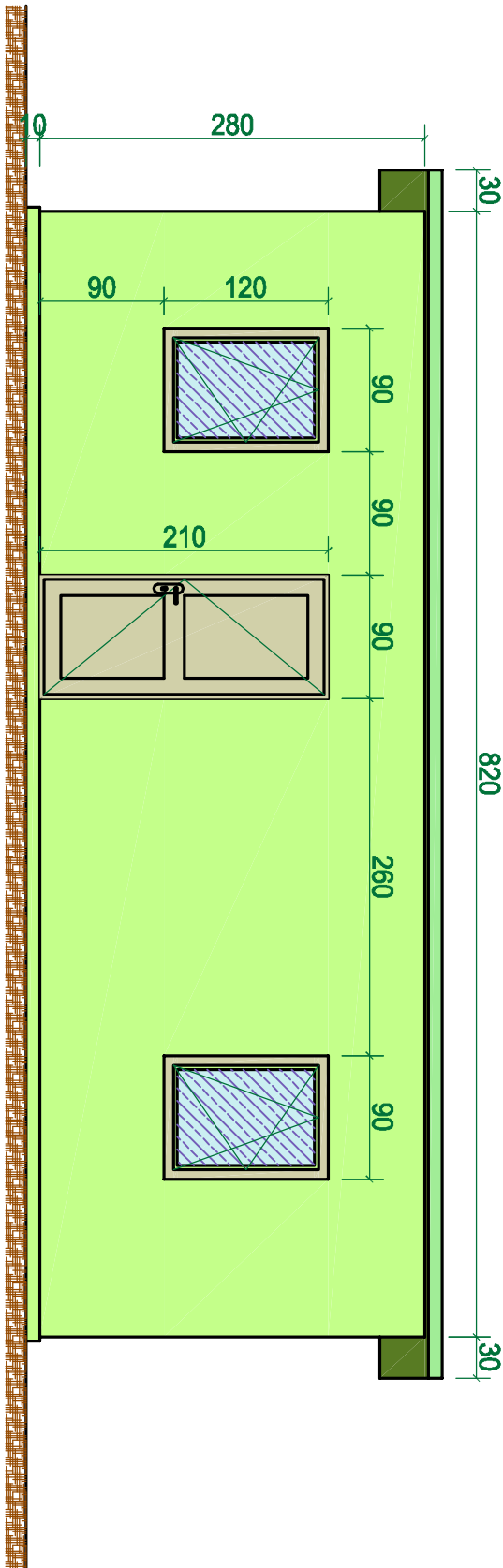
1	Description of booth and inner specifications	<ol style="list-style-type: none"> 1. The booth is to be transported in built-up condition (minimum 15 relocations). 2. Outer walls and the roof of the booth are to be made of sandwich panels (10 cm in width) according to the drawing polystyrene or polyurethane thermal protection (painted tin plates from inside and outside). 3. A-31 class laminated parquet with MDF skirting boards. 4. Interior walls and the ceiling are to be faced with wood laminated plastic (16 or 18 mm in width) it is preferably to be made of oak or dark cherry. 5. Double leaf door with the metal sheets (15 mm in width). 6. Metal-plastic windows with the hang-out mechanism and grid for protection from insects. 7. One hole in the wall for asbestos pipe for metal oven (120 mm in diameter). 8. Asbestos plates on walls and the ceiling (120x150x0.7-1 cm) covered by steel plates (120x150x0.2 cm in width). The plates are to be removable.
2	Characteristics of el.equipment and accessories	<ol style="list-style-type: none"> 1. Electricity is to be distributed from central electric shield with the el.switches (on surface) of the relevant power. 2. Cables should be gathered in plastic cable hangers of relevant parameters. 3. One air conditioner (3.4 kW) (for cooling). 4. 12 socket plugs (with earthing system and surface box). 5. 3 switches (with single button, surface box). 6. 6 hermetic lamps (60 watt bulbs). 7. Cables should be made of copper

II type sandwich panel booth

Façade

Scale 1:50

Format A-4

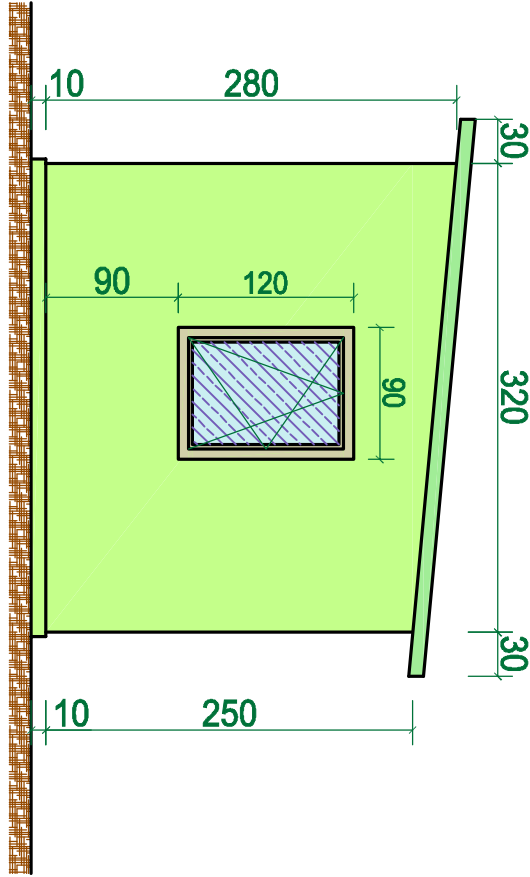
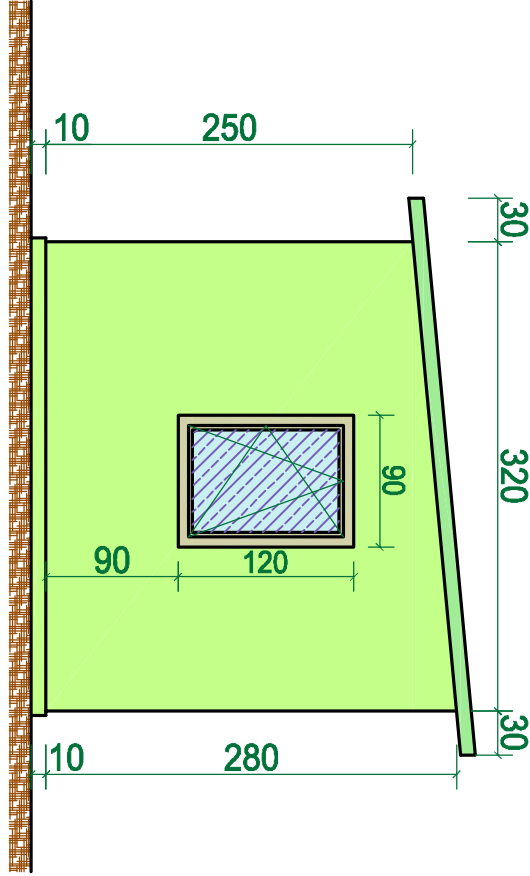


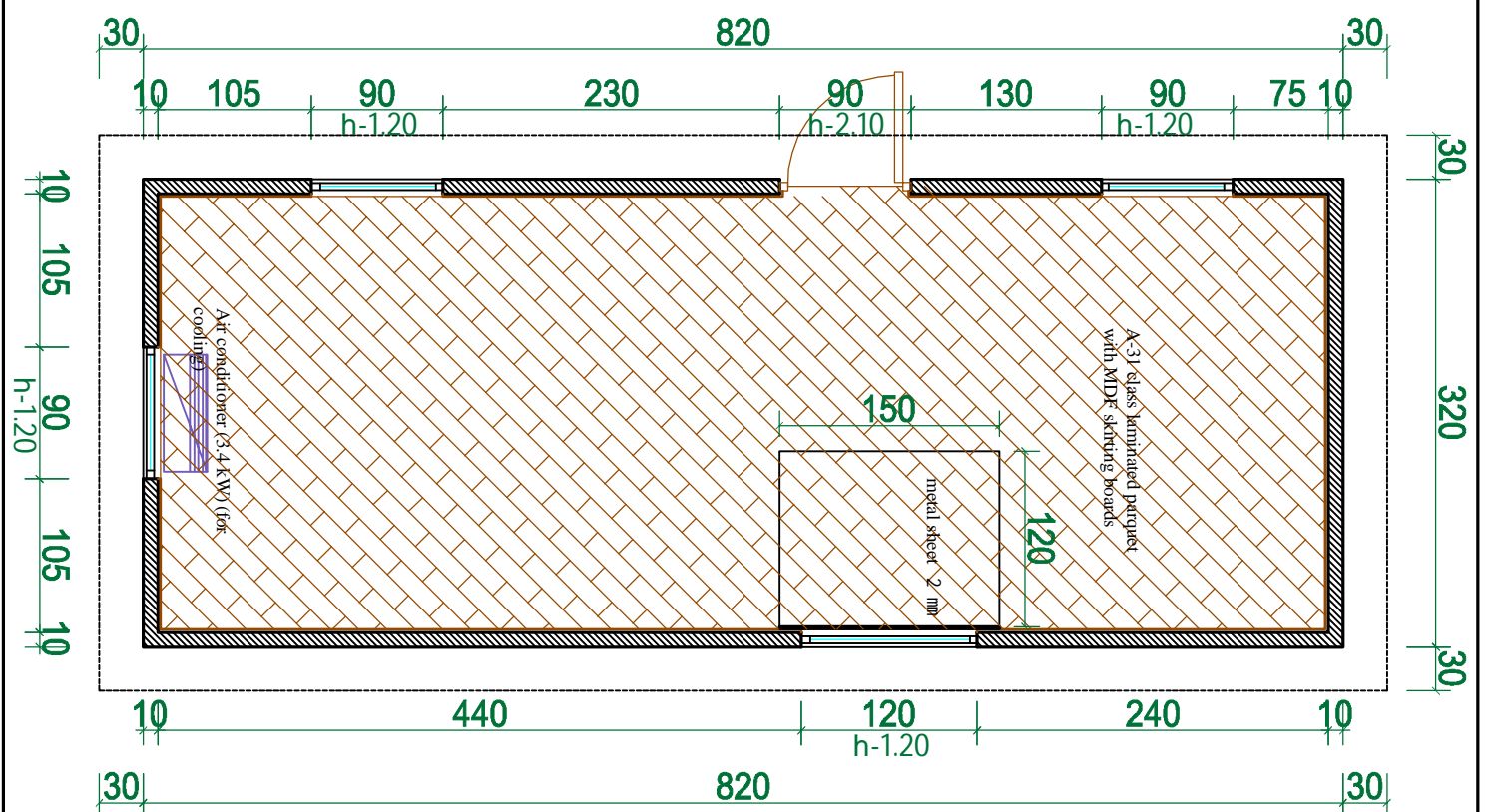
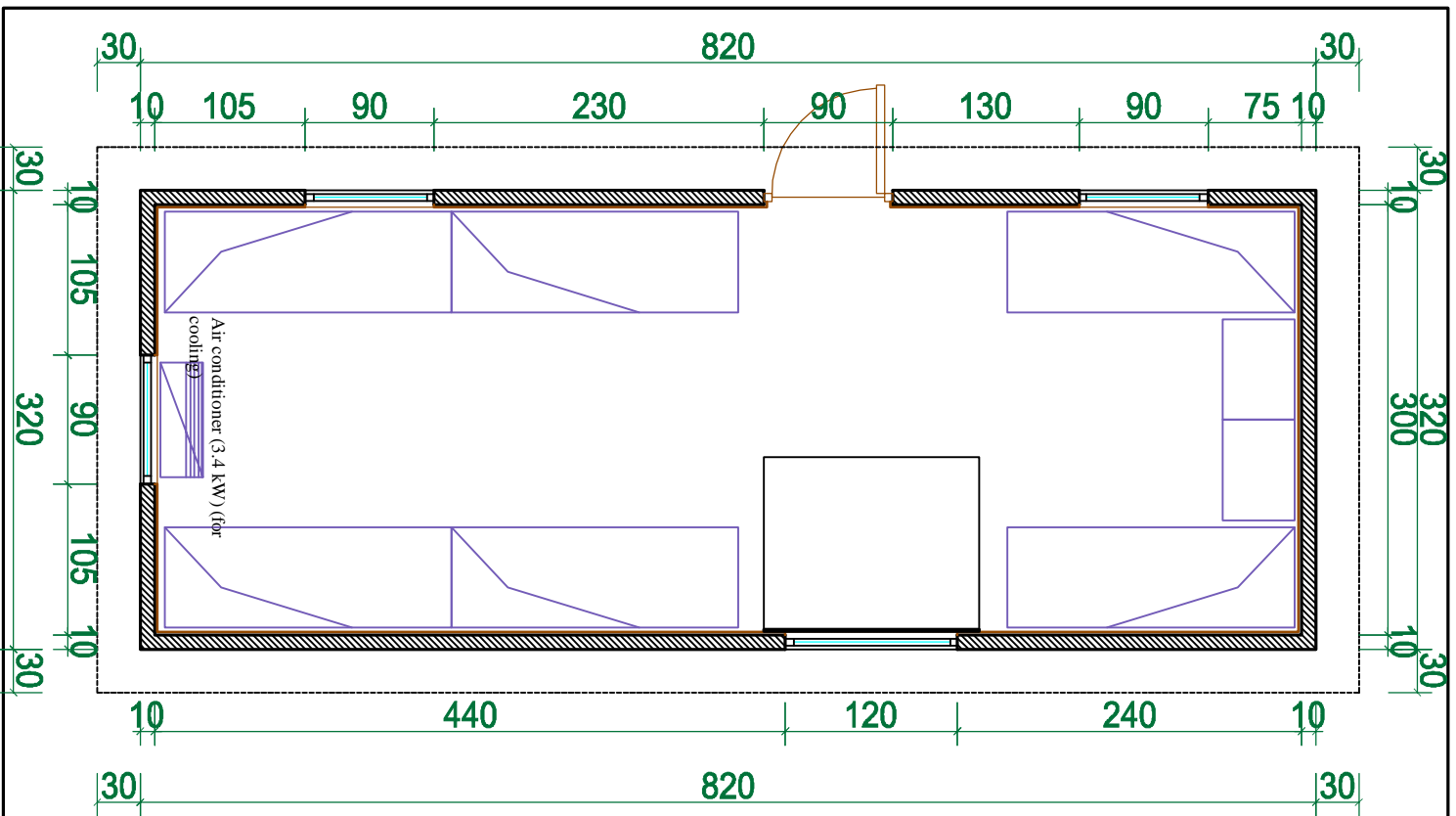
I type sandwich panel booth

Scale 1:50

Format A-4

Façade





II type sandwich panel booth

Scale 1:50

Format A-4

Plan and scheme of furniture placing