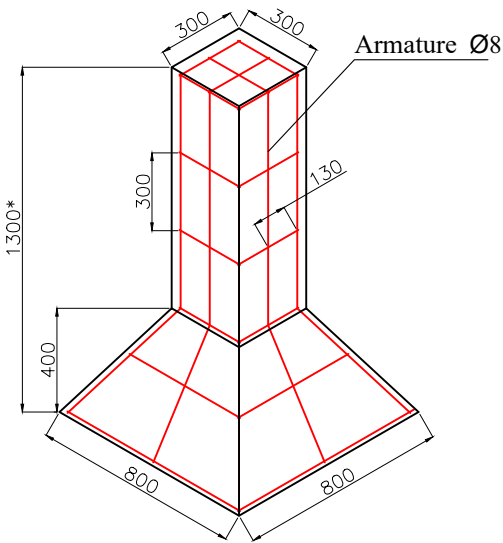
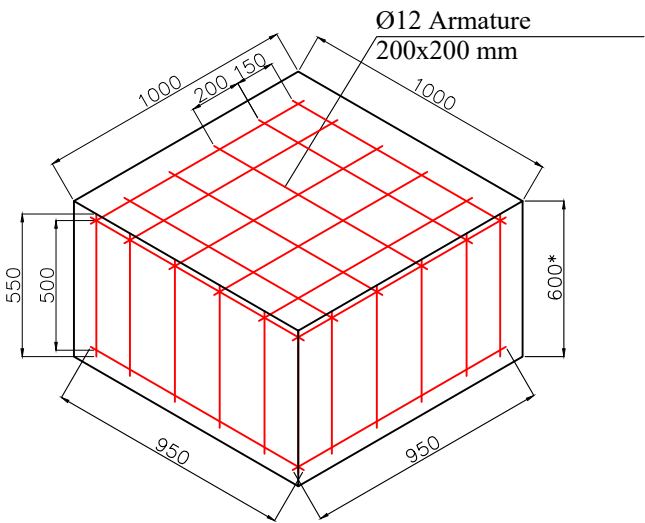


Foundation for
DN 500 valves

Foundation for
DN 150 valves



| Materials | Intermediate post | Straining post | Gate post | Gate | Total | |
|--|-------------------------|----------------|-----------|-------|--------|----------------|
| | 8 | 2 | 4 | 2 | | |
| | Materials for one units | | | | Quant. | Unit |
| Pipe 109x5 | | | 3.60 | | 14.40 | m |
| Steel square pipe 50x50x5 | | | | 7.40 | 14.80 | m |
| Steel square pipe 40x40x5 | | | | 1.90 | 3.80 | m |
| Steel square pipe 60x60x8 | | 3.10 | | | 6.20 | m |
| Steel square pipe 50x50x6 | 3.10 | | | | 24.80 | m |
| Angle bar 45x45x5 | 1.50 | 7.90 | 2.90 | | 39.40 | m |
| Steel line 50x10 | | | | 0.50 | 1.00 | m |
| Steel line 50x5 | | 4.80 | 2.40 | | 19.20 | m |
| Steel line 25x5 | 2.40 | 5.60 | 2.80 | | 41.60 | m |
| Steel line 15x3 | | | | 8.50 | 17.00 | m |
| Steel sheet 5 | | | | 0.03 | 0.06 | m ² |
| Bolted connection Ø8 | 5.00 | 8.00 | 3.00 | | 68.00 | pcs |
| Bolted connection Ø5 | 6.00 | 6.00 | 6.00 | | 84.00 | pcs |
| Screw connection Ø5 | | | | 22.00 | 44.00 | pcs |
| Eye bolt Ø5 | | 8.00 | 4.00 | | 32.00 | pcs |
| Loop | | | | 3.00 | 6.00 | pcs |
| Welded mesh Ø3 (Cell min 50x50; max 100x100) | 77 | | 3 | | 83 | m ² |
| Helixs shaped barbed wire 600 Ø3 | 28 | | | | 28 | m |
| Barbed Wire Ø3 | | | 3 | | 6 | m |
| Wire Ø3 | 224 | | | | 224 | m |
| Wire Ø1.6 | 91 | | | | 91 | m |

| Materials | Well 7700x7700x2600 | Foundation for DN 500 valves | Foundation for DN 150 valves | Total | |
|-----------------|-------------------------|---------------------------------|---------------------------------|--------|----------------|
| | 1 | 1 | 3 | | |
| | Materials for one units | | | Quant. | Unit |
| Armature Ø8 | 1384 | | 22.34 | 1451.0 | m |
| Armature Ø12 | 955 | 26.00 | | 981.0 | m |
| Concrete | 29 | 0.60 | 0.19 | 30.2 | m ³ |
| Sand | 120 | | | 120.0 | m ³ |
| Gravel 10-20 mm | 6 | | | 6.0 | m ³ |
| Gravel 20-40mm | 6 | | | 6.0 | m ³ |

Gravel (thickness-100mm; size-10-20 mm) to be spread on under a well.
 All posts of fencing to be fixed by concrete in the walls of a well.
 All components of fencing to be zinc.
 Gravel (thickness-100mm; size-20-40 mm) to be spread on the whole area.
 *Sizes are approximate and they will be corrected during construction period.

| | | | | | |
|-----------------|------------------|--------------------------------|--|--------------------|----------|
| Approved by | A. Dekanosidze | | East - West Gas Main Pipeline Kobuleti Branch | | |
| Checked by | T. Javakhishvili | | DN500 valve with double venting. Valve node fencing foundation and fence off elements in the deployment scheme | | |
| Designed by | T. Mrevlishvili | | DCC NUMBER: K0BU60-GW05-PL-DTL-00004 | SHEET No. 1(1) | REV. C01 |
| Drawn by | A. Farii | | No: | | |
| REV. | C01 | Georgian Oil & Gas Corporation | | PAPER SIZE: ISO A3 | |
| 01.06.2020/DATE | 06/07/15 | SCALE: | | | |