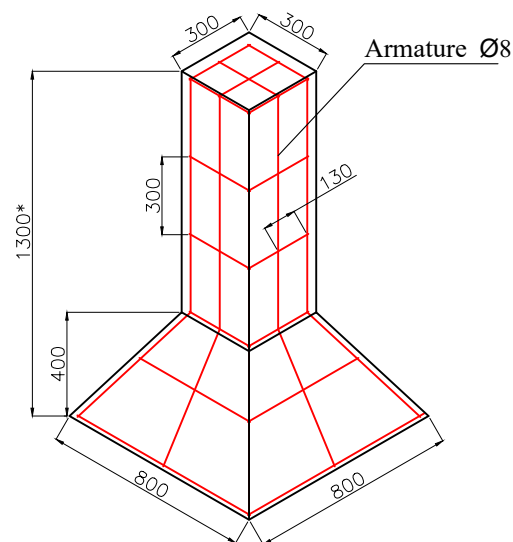
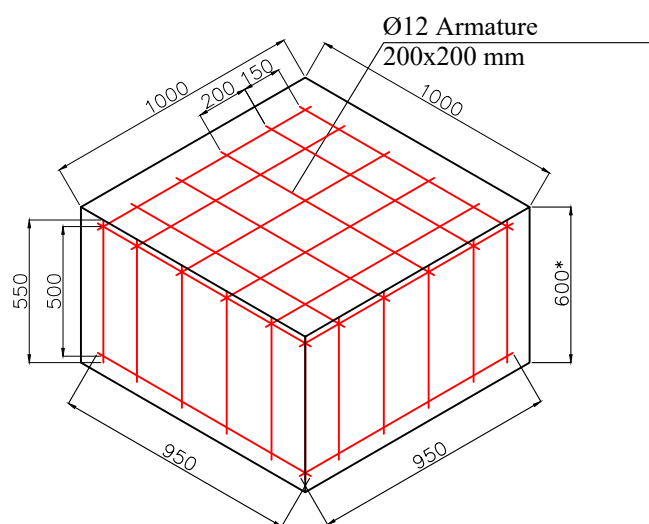


Foundation for  
DN 500 valves

Foundation for  
DN 150 valves



Materials	Intermediate post	Straining post	Gate post	Gate	Total	
	8	2	4	2		
	Materials for one units				Quant.	Unit
Pipe 109x5			3.60		14.40	m
Steel square pipe 50x50x5				7.40	14.80	m
Steel square pipe 40x40x5				1.90	3.80	m
Steel square pipe 60x60x8		3.10			6.20	m
Steel square pipe 50x50x6	3.10				24.80	m
Angle bar 45x45x5	1.50	7.90	2.90		39.40	m
Steel line 50x10				0.50	1.00	m
Steel line 50x5		4.80	2.40		19.20	m
Steel line 25x5	2.40	5.60	2.80		41.60	m
Steel line 15x3				8.50	17.00	m
Steel sheet 5				0.03	0.06	m <sup>2</sup>
Bolted connection Ø8	5.00	8.00	3.00		68.00	pcs
Bolted connection Ø5	6.00	6.00	6.00		84.00	pcs
Screw connection Ø5				22.00	44.00	pcs
Eye bolt Ø5		8.00	4.00		32.00	pcs
Loop				3.00	6.00	pcs
Welded mesh Ø3 (Cell min 50x50; max 100x100)	77		3		83	m <sup>2</sup>
Helixs shaped barbed wire 600 Ø3	28				28	m
Barbed Wire Ø3			3		6	m
Wire Ø3	224				224	m
Wire Ø1.6	91				91	m

Materials	Well 7700x7700x2600	Foundation for DN 500 valves	Foundation for DN 150 valves	Total	
	1	1	2		
	Materials for one units				Quant.
Armature Ø8	1384		22.34	1428.7	m
Armature Ø12	955	26.00		981.0	m
Concrete	29	0.60	0.19	30.0	m³
Sand	120			120.0	m³
Gravel 10-20 mm	6			6.0	m³
Gravel 20-40mm	6			6.0	m³


Gravel (thickness-100mm; size-10-20 mm) to be spread on under a well.

All posts of fencing to be fixed by concrete in the walls of a well.

All components of fencing to be zinc.

Gravel (thickness-100mm; size-20-40 mm) to be spread on the whole area.

\*Sizes are approximate and they will be corrected during construction period.

Approved by	A. Dekanosidze	 საქართველოს ნავთობისა და გაზის კორპორაცია Georgian Oil & Gas Corporation	East - West Gas Main Pipeline Kobuleti Branch		
Checked by	T. Javakhishvili		DN500 valve with single venting. Valve node fencing foundation and fence off elements in the deployment scheme		
Designed by	T. Mrevlishvili		DCC NUMBER: K0BU60-GW05-PL-DTL-00003	SHEET No. 03/06/2020 №	REV.
Drawn by	A. Farii		No:	1(1)	C01
REV.	C01		SCALE:		
01.06.2020/DATE	06/07/15				