


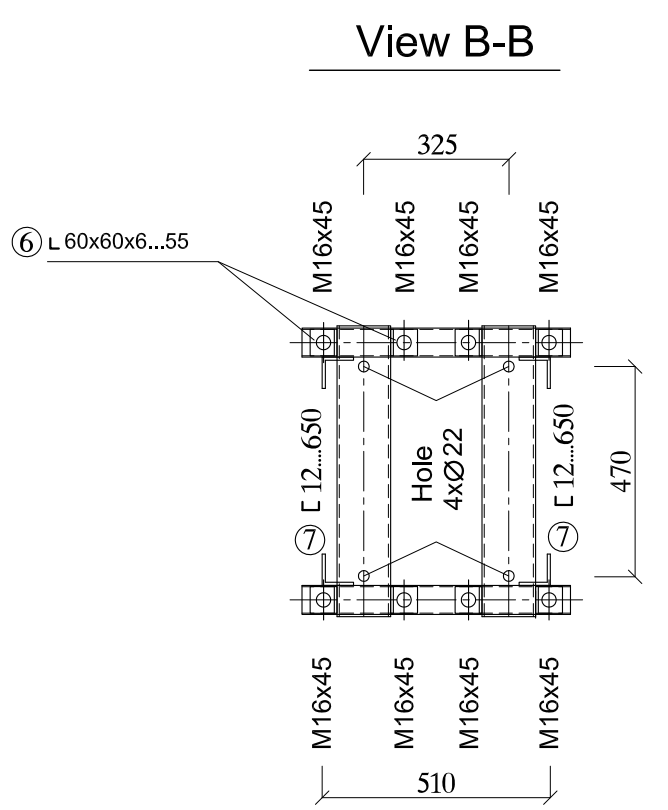
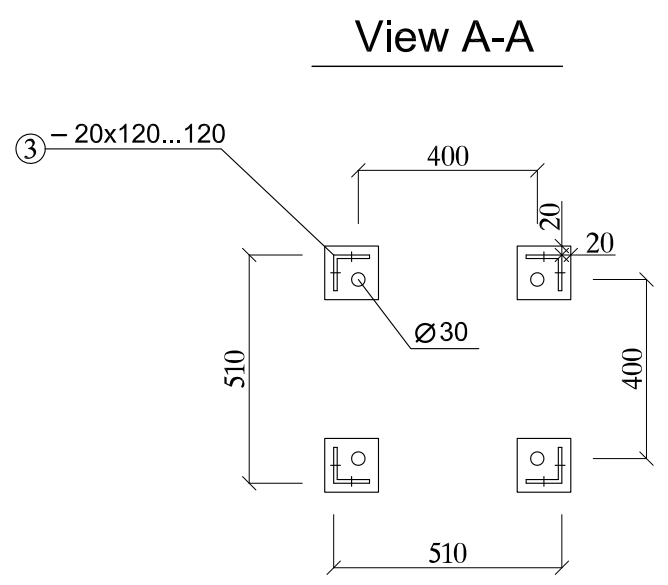
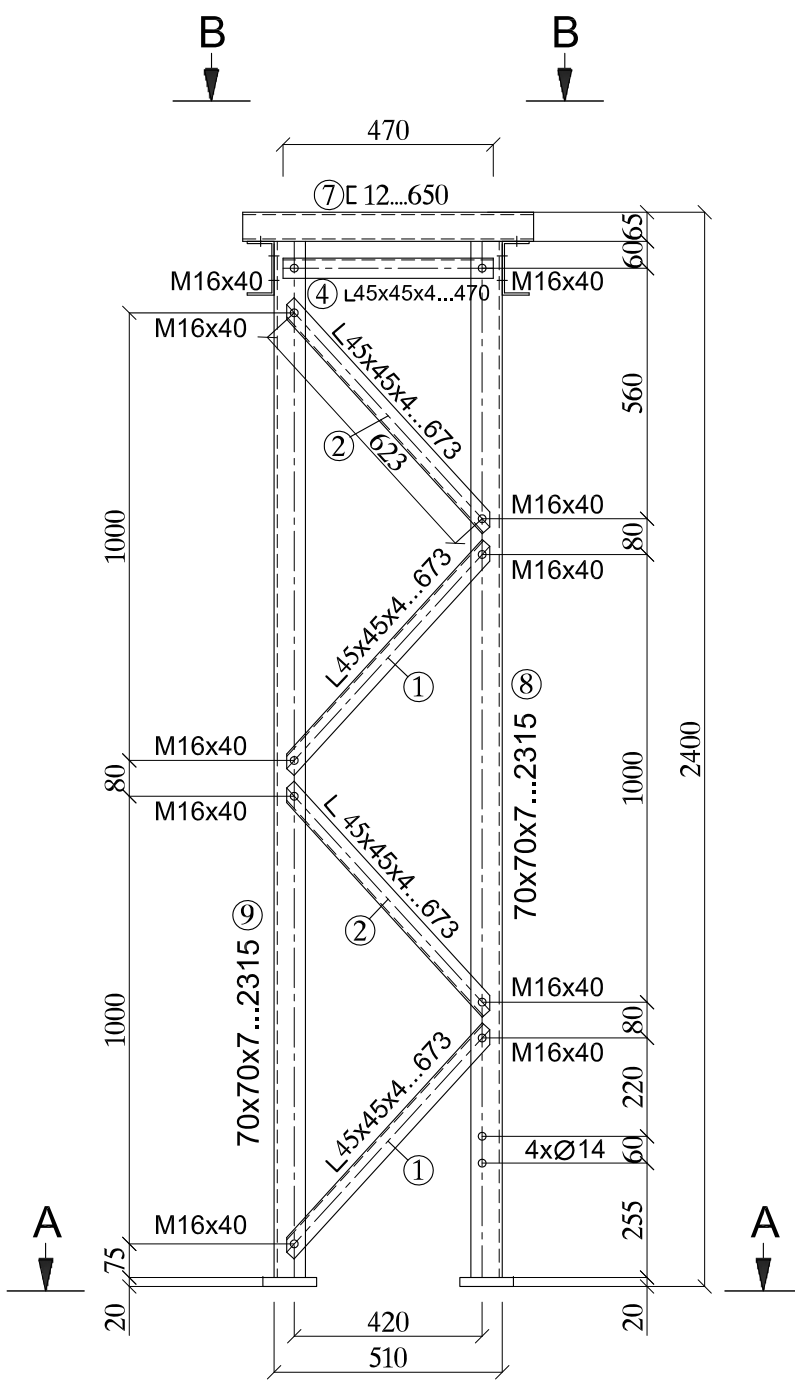
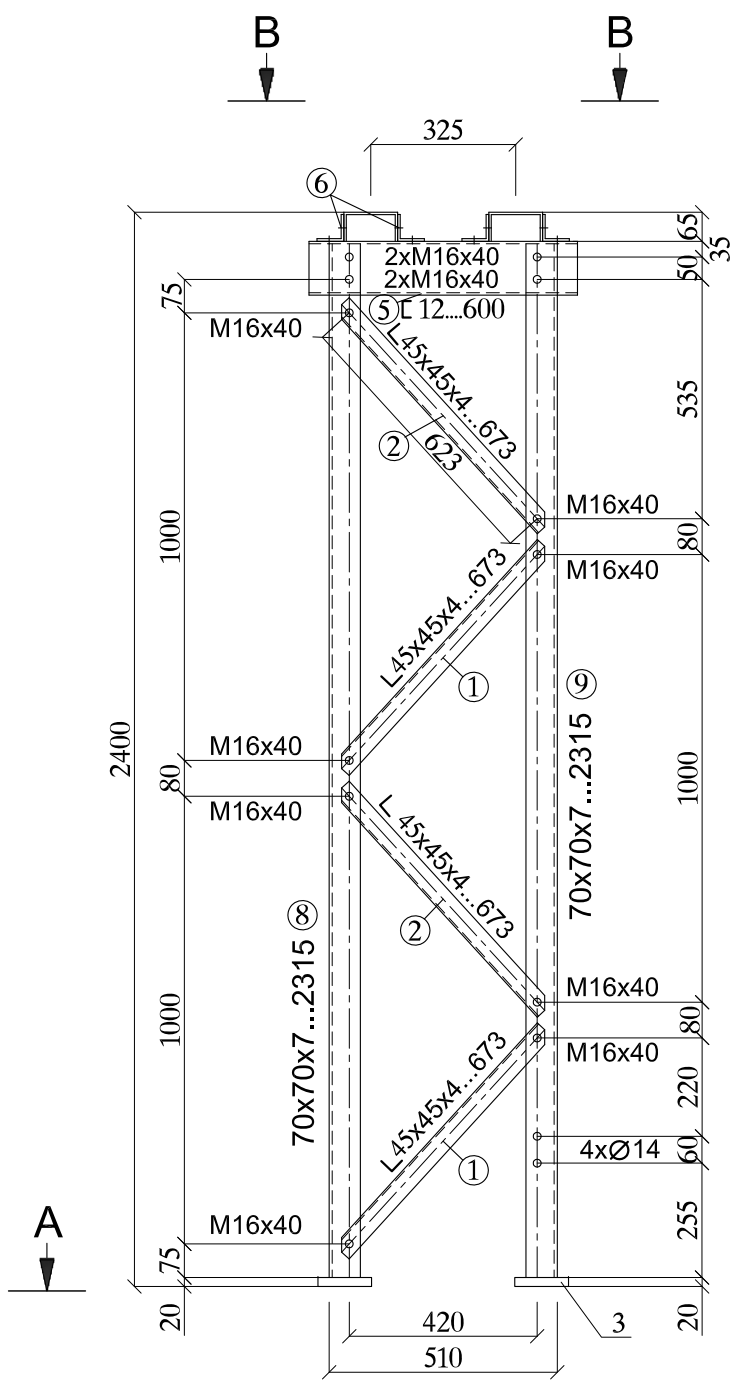
DRAWING № 1

Note: Details of the construction is made of hot dip galvanized. DIN EN ISO 1461

SUPPORT FOR CURRENT TRANSFORMERS H=3.6 M  
QUANTITY: 12 UNITS

Specification					
№	Title	Lenght (mm)	Quantity	Weight, kg	
				1 item	Sum
1	L 45x45x4	673	12	1.84	22.05
2	L 45x45x4	673	12	1.84	22.05
3	- 20x120	120	4	2.26	9.04
4	L 45x45x4	470	2	1.28	2.56
5	C 12	850	2	8.84	17.68
6	L 60x60x6	55	8	0.30	2.40
7	C 12	780	2	8.11	16.22
8	L 70x70x7	3515	2	25.98	51.56
9	L 70x70x7	3515	2	25.98	51.56
	Bolt M16x40	--	60	0.113	6.78
	Bolt M16x45	--	8	0.127	1.02
	Nut M16	--	68	0.033	2.24
	Washer M16	--	68	0.01	0.68
Sum:					205.31

	Office of design. Substation division		
	DRAWING TITLE:		
SUPPORT FOR CURRENT TRANSFORMERS H=3.6 M			
DRAWING NUMBER:	SHEET №	SHEETS	FRMT
GSE.100.MS-001	1	1	A4



DRAWING № 2

SUPPORT FOR VOLTEGE TRANSFORMERS H=2.4 M  
QUANTITY: 15 UNITS

Note: Details of the construction is made of hot dip galvanized. DIN EN ISO 1461

Specification					
№	Title	Lenght (mm)	Quantity	Weight, kg	
				1 item	Sum
1	L 45x45x4	673	8	1.84	14.72
2	L 45x45x4	673	8	1.84	14.72
3	- 20x120	120	4	2.26	9.04
4	L 45x45x4	470	2	1.29	2.58
5	c 12	600	2	6.24	12.48
6	L 60x60x6	55	8	0.30	2.40
7	c 12	650	2	6.76	13.52
8	L 70x70x7	2315	2	17.11	34.22
9	L 70x70x7	2315	2	17.11	34.22
	Bolt M16x40	--	44	0.11	4.84
	Bolt M16x45	--	8	0.11	0.88
	Nut M16	--	52	0.03	1.56
	Washer M16	--	52	0.01	0.52
Sum:					145.7

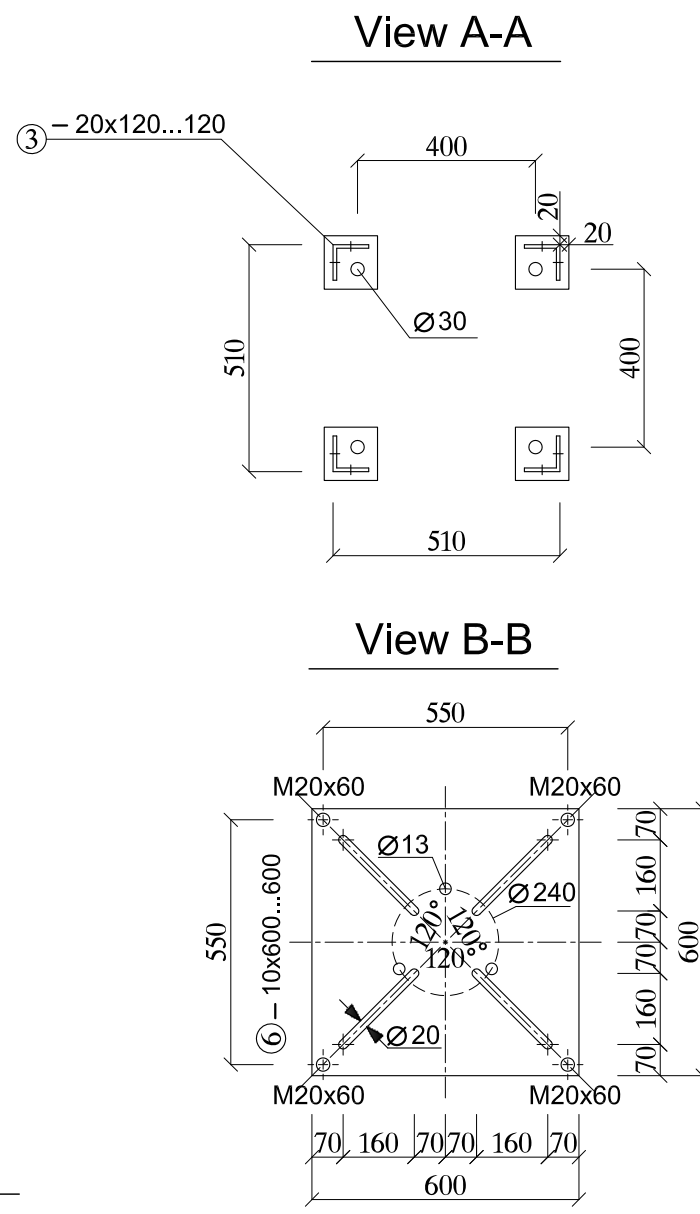
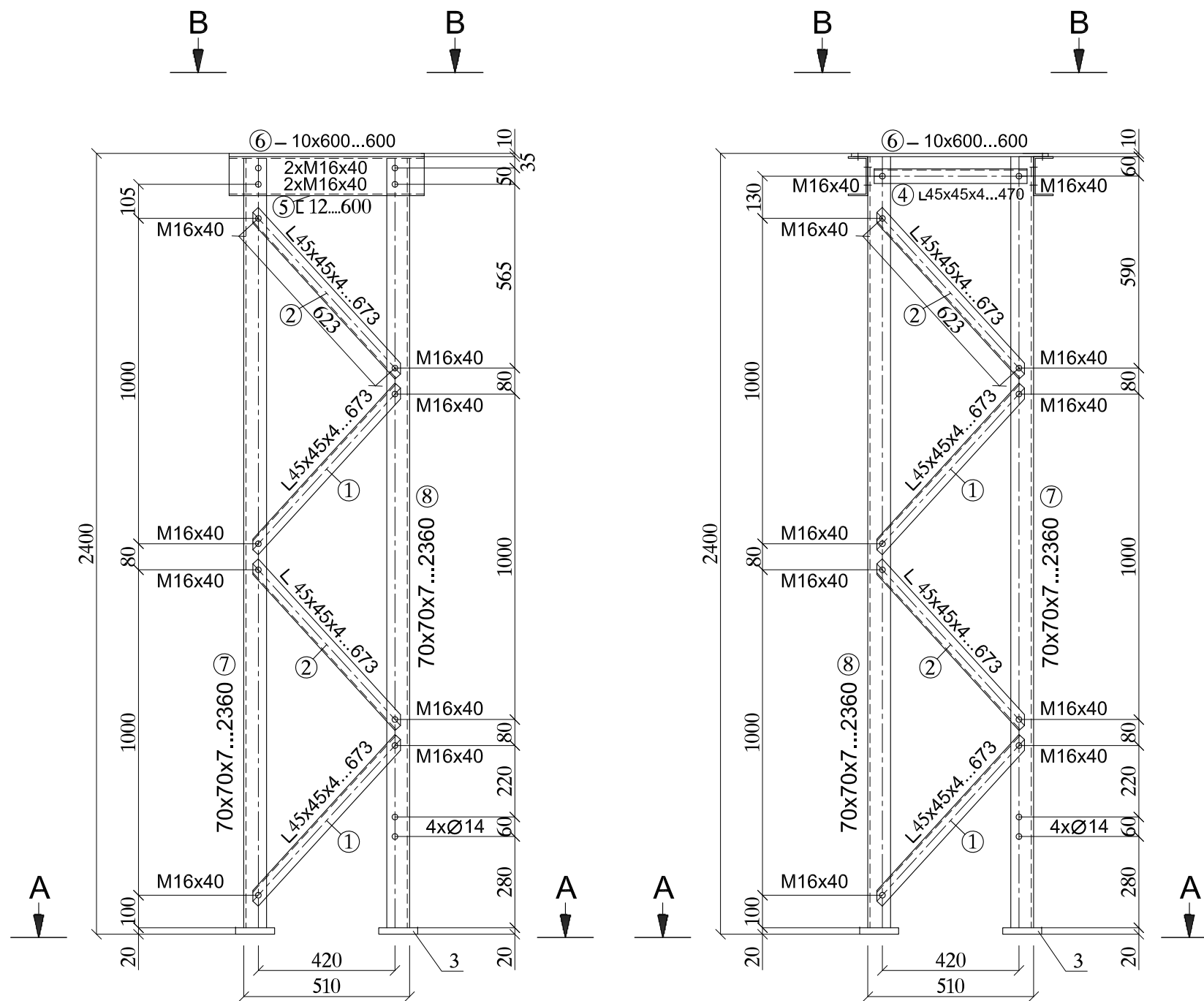


Office of design.  
Substation division

DRAWING TITLE:

SUPPORT FOR VOLTEGE TRANSFORMERS H=2.4 M

DRAWING NUMBER:	SHEET №	SHEETS	FRMT
GSE.100.MS-002	1	1	A4




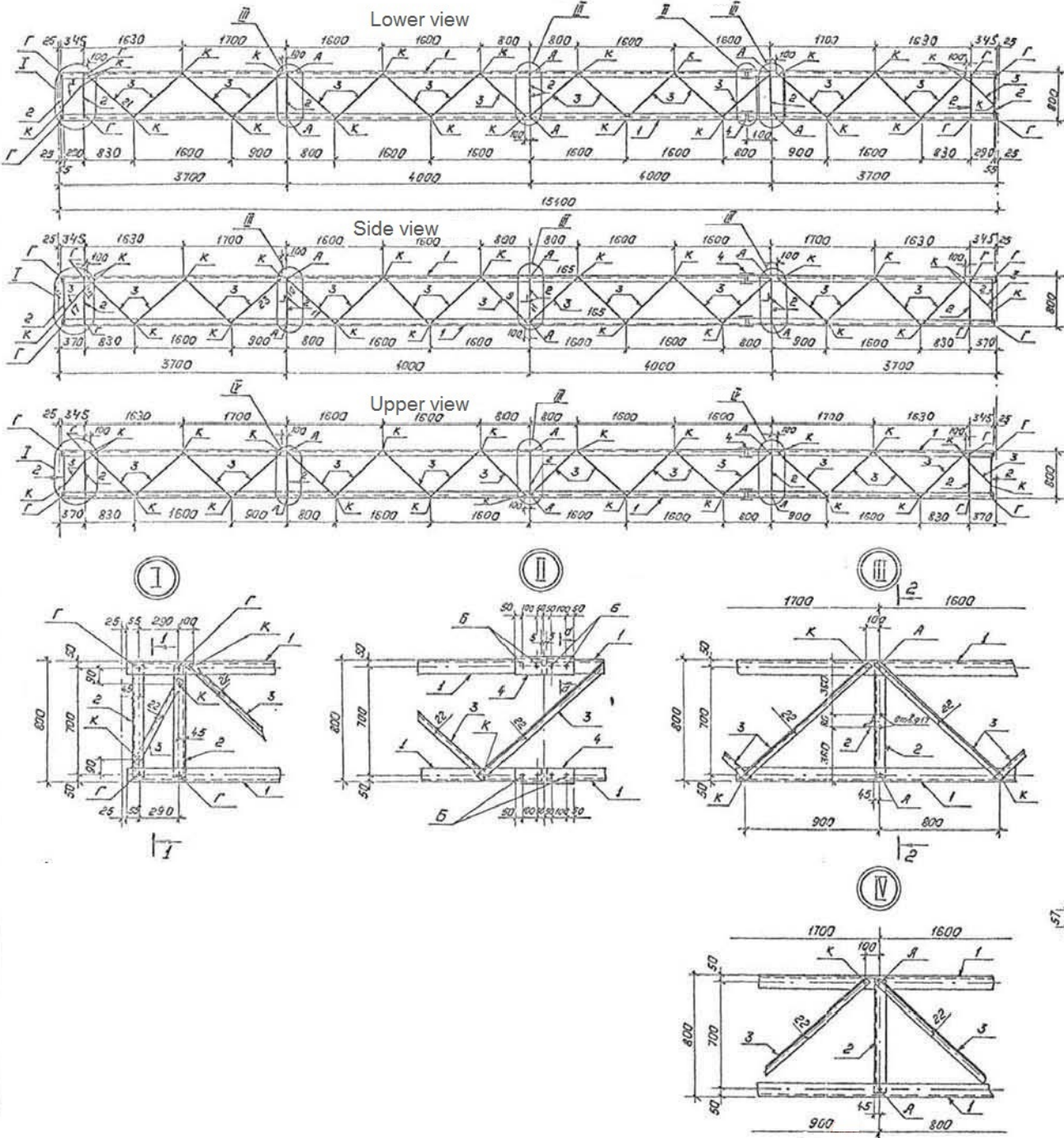
DRAWING № 3

Specification					
№	Title	Lenght (mm)	Quantity	Weight, kg	
				1 item	Sum
1	L 45x45x4	673	8	1.84	14.72
2	L 45x45x4	673	8	1.84	14.72
3	- 20x120	120	4	2.26	9.04
4	L 45x45x4	470	2	1.28	2.56
5	С 12	600	2	7.28	14.56
6	- 10x600	600	1	28.26	28.26
7	L 70x70x7	2360	2	17.00	34.00
8	L 70x70x7	2360	2	17.00	34.00
	Bolt M20x60	--	4	0.15	7.80
	Bolt M16x40	--	52	0.19	0.76
	Nut M20	--	4	0.03	1.56
	Nut M16	--	52	0.04	0.16
	Washer M20	--	4	0.01	0.52
	Washer M16	--	52	0.04	0.16
	Sum:				162.82

Note: Details of the construction is made of hot dip galvanized. DIN EN ISO 1461

SUPPORT FOR SURGE ARRESTERS AND POST INSULATORS H=2.4 M  
QUANTITY: 37 UNITS

	Office of design. Substation division		
	DRAWING TITLE:		
SUPPORT FOR SURGE ARRESTERS AND POST INSULATORS H=2.4 M			
DRAWING NUMBER:	SHEET №	SHEETS	FRMT
GSE.100.MS-003	1	1	A4



Instead of length 15.4 m. of feeder portal traverse it must be made length of 14.2 m.

# Pitting of traverse

DRAWING № 5

