

' saqarTvel os okupirebuli teritoriebidan  
iZulebiT gadaadgil ebul pirTa, gansaxlebi sa  
dali tolvilTa samini stro

kontraqti # 5085/79

q. gori  
cxinvalis gzaadkecili #14  
yofili saavadmyofos Senobis  
rekonstruqcia  
saxovrebel korpused

santeqnikuri nawili

muSa proeqti

„ b.d. j gufi „

naxazebi s sia

#	d a s a x e l e b a	aRvni Sna
1	saerTo furceli	wk-1
2	cokolis sarTulis gegma "wk" qselis dataniT	wk-2
3	pirveli sarTulis gegma "wk" qselis dataniT	wk-3
4	meore sarTulis gegma "wk" qselis dataniT	wk-4
5	mesame sarTulis gegma "wk" qselis dataniT	wk-5
6	meoTxe sarTulis gegma "wk" qselis dataniT	wk-6
7	civi wylis qselis sqema	wk-7
8	kanalizaciis sqemebi	wk-8
9	kanalizaciis sqemebi	wk-9
10	specifikacia	wk-10

ganmarteba

moceuli proeqtiT gaTvaliswinebulia qgorSi cxinvalis gzatkecilze mdebare saavadmyofos Senobis sacxovrebel saxlad rekonstruqcia damisTvis wyal momarageba da kanalizaciis Sida qselis damuSaveba.

proeqti damuSavebulia amJamad moqmedi samSeneblo normebsa da wesebis gaTvaliswinebit.

sasmel-sameurneo wylit momarageba gaTvaliswinebulia qal aqis qselidan. wyal sadenis qseli ewyoba plastmasis ufolgomil ebil PN10 d=20-75 mm. civi wylis gamanawil ebeli mili montajdeba cokolis sarTulis Weris qves da Tboizolirdeba. Tboizolacia unda gaukeTdes agreTve yvela Riad gayvani wylis mli s.

Senobis sayofacxovrebo kanalizacia ikribeba cokolis sarTulze da ramodeni me gamyvanis meSveobit uerTdeba qucis kanalizaciis qselis. kanalizaciis dgarebi gayvani ignes saxuravis zemoT 0.7 metr iT. kanalizaciis qseli ewyoba plastmasis mil ebil d=50-100 mm. kanalizaciis mil ebis gayvanis dros aucil ebelia qanobebis dacva •100-sTvis- >0.02, xolo •50-sTvis- >0.035.

pirobiTi aRni Svnebi

Civi wylis mil sadeni

kanalizacia

pirsabani

unitazi

abazana

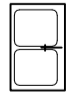
Wurwli sarecxani

k.dg (w.dg) kanalizaciis (civi wylis) dgari

revizia

kanalizaciis gamwmendi

indi vidualuri wyal mzomi

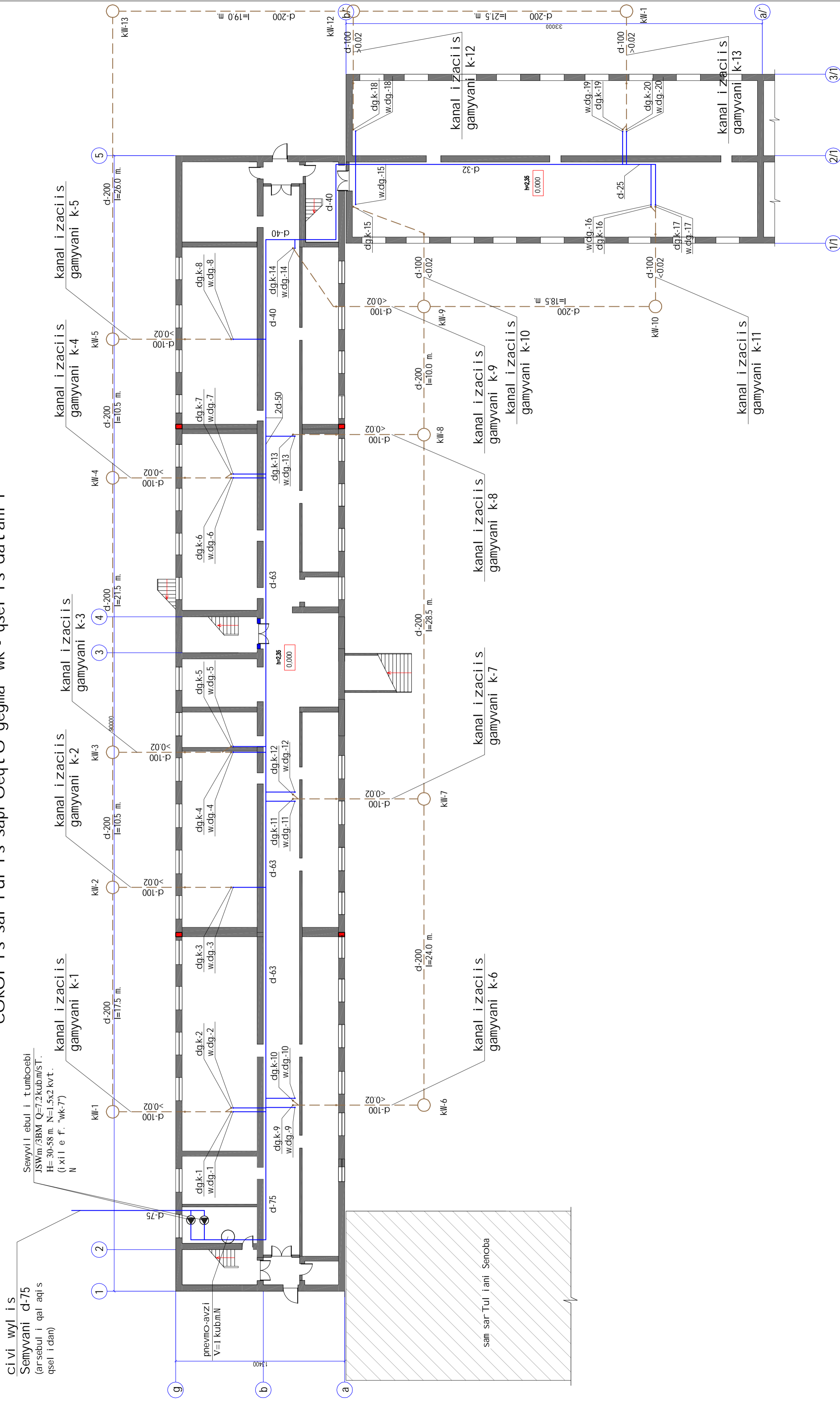


Ziritadi macvenebel ebis cxrili

sistemis dasaxel eba	saWiro wneva SemyvanZe wylia svetis,m	saangariSo xarji	
		kub.m/dR	kub.m/sT
sasmel-sameurneo wyal momarageba	30	70	12
sameurneo-fekaluri kanalizacia		70	12

Tanadoboba	guri	xolnowera	Taribi	qgori, cxinvalis qzadkeli #14	Furc.	Formati
dirrectori	b. dgebulze			Yofili saavadmyofos Senobis	stadia	Furc.
arqiteqtori	e. csefalSwili			rekonstruqcia sacxovrebel saxlad	mp.	wk-1
damuSava	aj. afaraswili					A 2
Saxoweba	g. cxiTze				pasTabi	b.d. j gufi

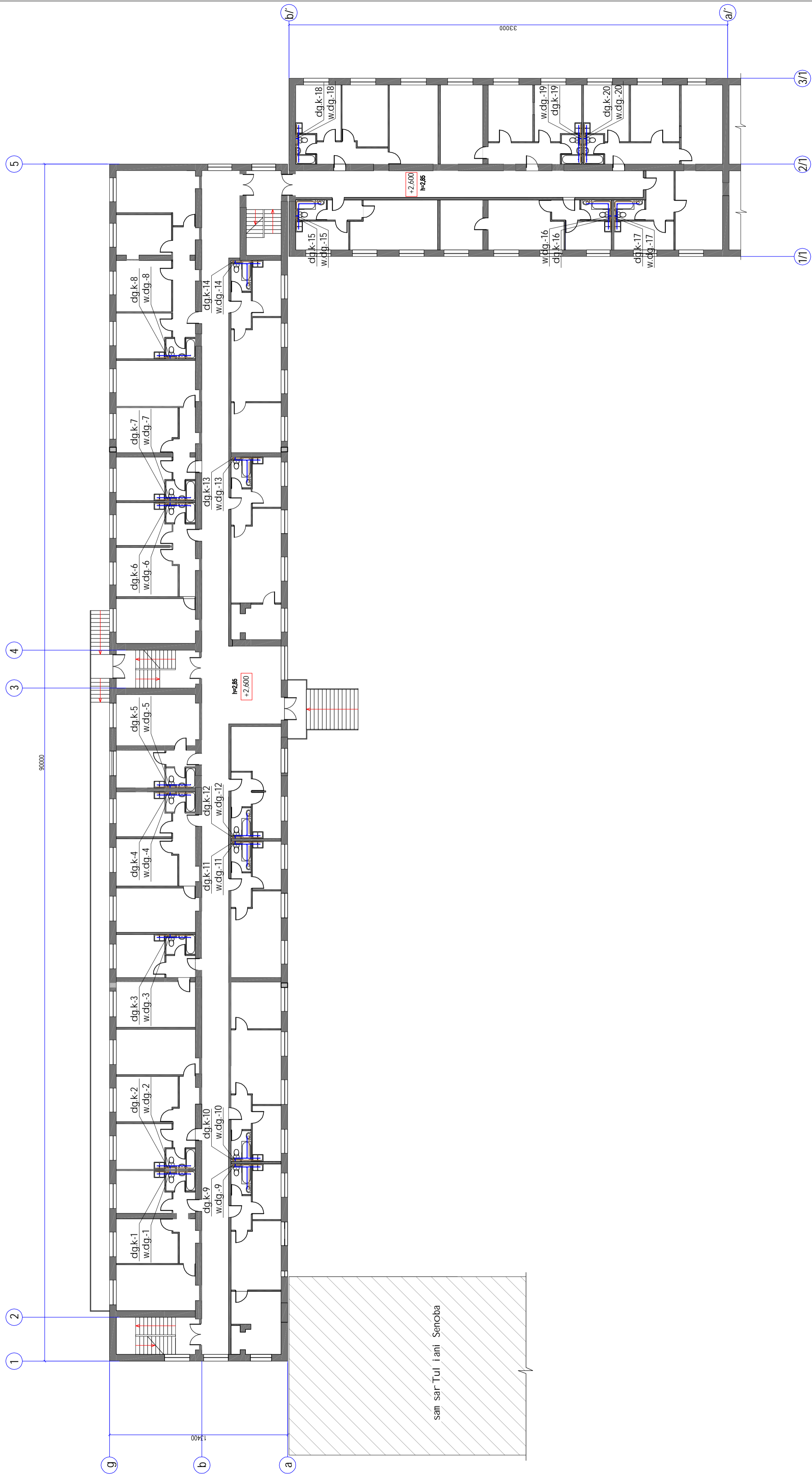
# cokol is sarTul is saproeqt o gegma "wk"- qsel is datani T



Tanadecoba	guar'i	xol nowera	TariBi	q. gori, cxivnval is qzadkeci i #14	Formati
dir'eqt ori	b. dgebuze			yoFil i savadyof os Senobi s	stadi a
larqi Teqt ori	e. oser'aj swi i i			rekonstruqi a sacovrabel saxi ad	mp.
dsamuSava	aj. ar'ar'aw'i i				pasStabi
Saxowaba	g'axel'ze				1:200
				<b>COKOL is sarTul is saproeqt o gegma "wk"- qsel is datani T</b>	<b>b.d. j gufi</b>

Seni Svna: mi l ebi s da dgarebi s di ametrebi i xil e aqsonometri ul sqenebze.

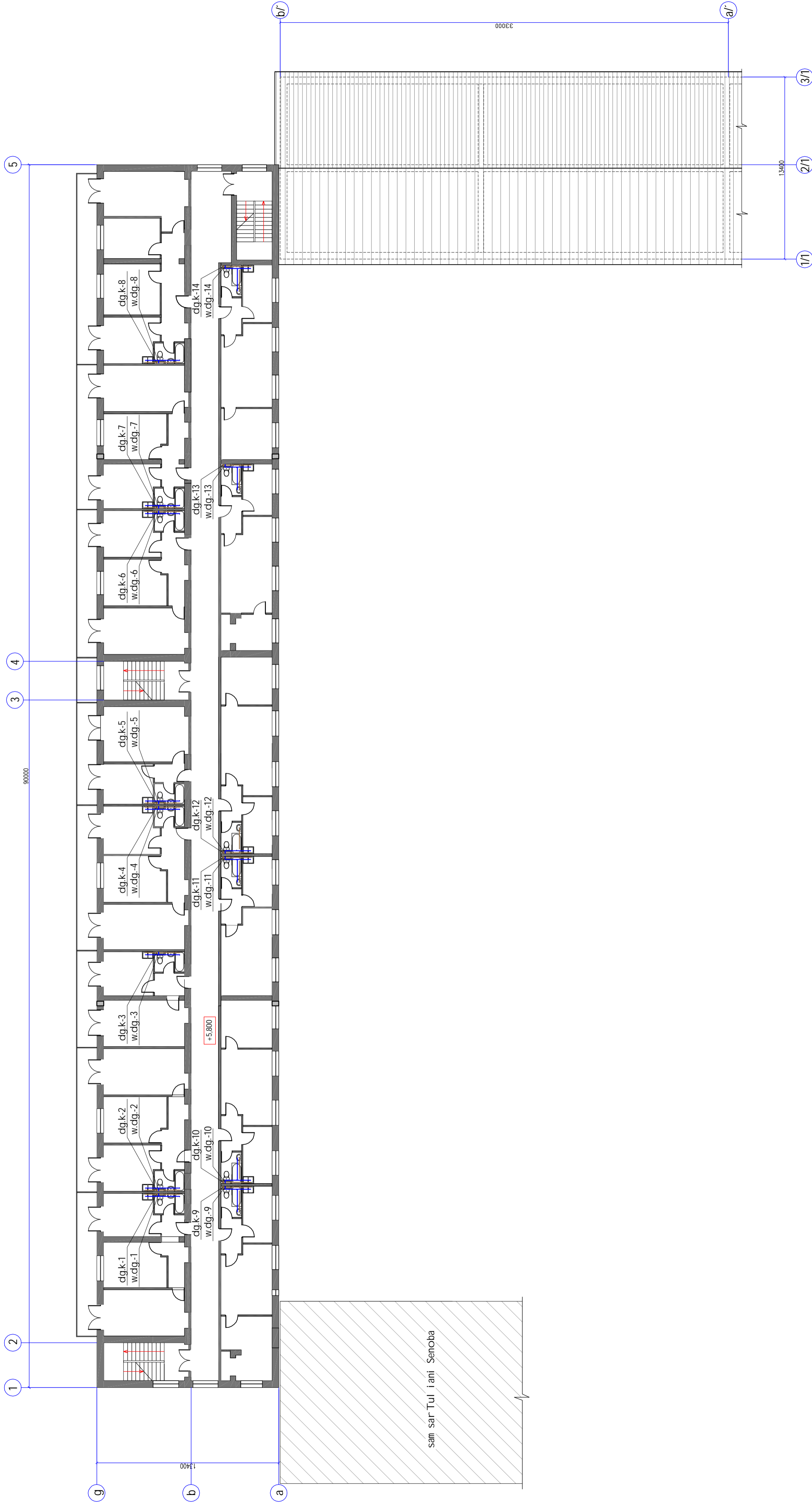
pi rvel i sarTul is sapr oeqt o gegma  
"wk"-qsel is datani T



Tanadeboba	guar'i	xol nowara	TariBi	q. gori, cxi nval is qzadkeci li #14	stadi a	Furc.	Formati
di reet ori	b. dgebuZe			yoFil i saavadyoFos Senobis	mp.	wk-3	A 2
arqi Teqt ori	e. oseraJswi i			rekonst ruoci a sacovrebel saxi ad			
dmanuSava	aj ararawli i			pi rvel i sarTul is	pasStabi		
Sawowma	gCxiwZe			sapr oeqt o gegma "wk"-qsel is	1:200	b.d. j gufi	
				datani T			

Seni Svna: mi l ebi s da dgarebi s di ametrebi i xil e aqsonometri ul sqenebze.

meore sarTul is saproeqto gegma  
"wk"-qsel is datani T

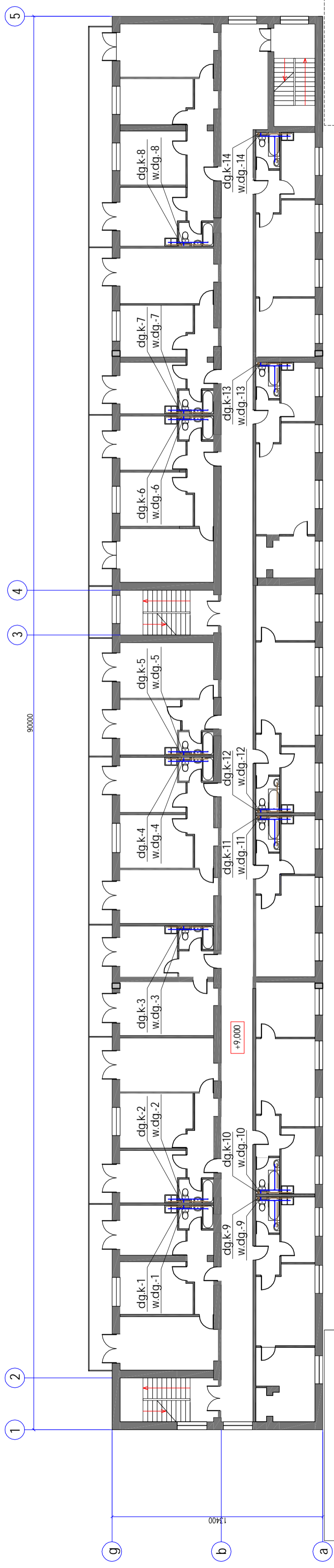


Tanadedobaa	guar'i	xol nowera	Tari'bi	q. gori, cxi nval is qzadkeci li #14	stadia	Furc.	Formati
di'raet ori	b. dgebu'ze			yo'fil i sapvadyofos Senobis	mp.	wk-4	A 2
arqi Teq'ori	e. oser'ajswi li			rekonstru'cia sacov'ebel saxi ad			
dama'Sava	aj af'ar'aswi li			meore sarTul is	pasStabi		
Saxowaa	g'cxi'ze			sap'roeqto gegma "wk"-qsel is	1:200		b.d. j gu'fi
				datani T			

Seni Svna: mi l ebi s da dgarebi s di ametrebi i xil e aqsonometri ul sqenebze.



mesame sarTul is saproeqto gegma  
"wk"-qsel is datani T



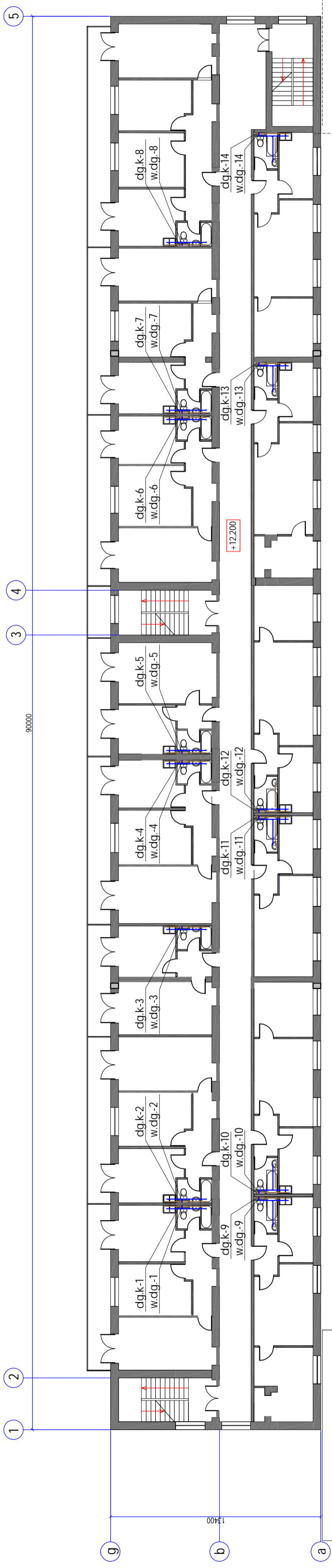
sam sarTuliani Senoba

erT sarTuliani  
Senoba

Seni Svna: mi l ebi s da dgarebi s di ametrebi i xil e aqsonometri ul sqenebze.

Tanadecoba	guar'i	q. gori, cxinval is qzadkeci li #14	stadi a	Furc. i	Formati
di reet ori l	b. dgebuaze	yo fil i saavadyo Fos Senobis	m.p.	wk-5	A 2
arqi Teqt ori l	e. oseraj Swi l i	rekonstruqci a sacxovrebel saxi ad	pasStabi	b.d. j gufi	
dama Svna	aj ar ar a Swi l i	mesame sarTul is	1:200		
Saxovna	gCxelZe	saproeqto gegma "wk"-qsel is			
		datani T			

meOTxe sarTul is saproeqto gegma  
"wk"-qsel is datani T



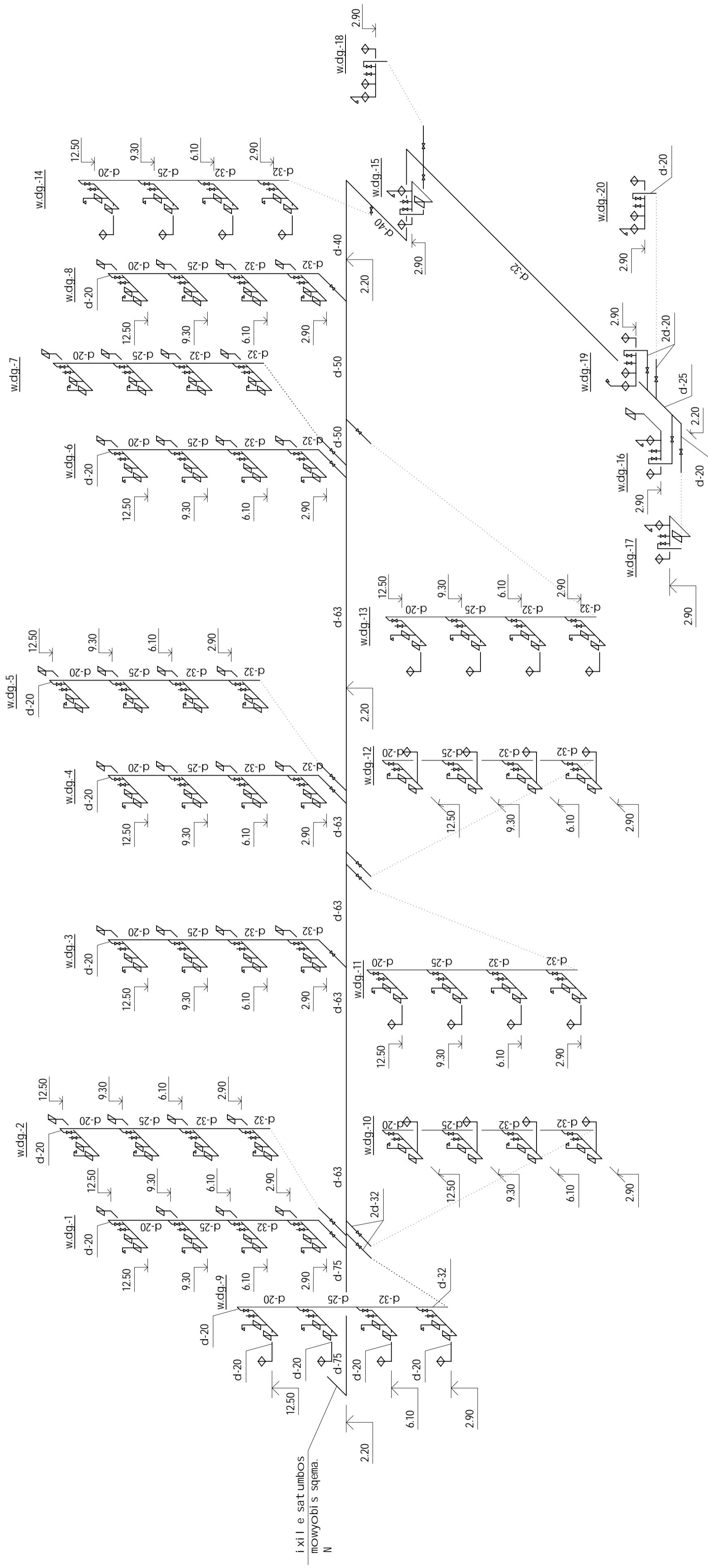
sam sarTuliani Senoba

erT sarTuliani  
Senoba

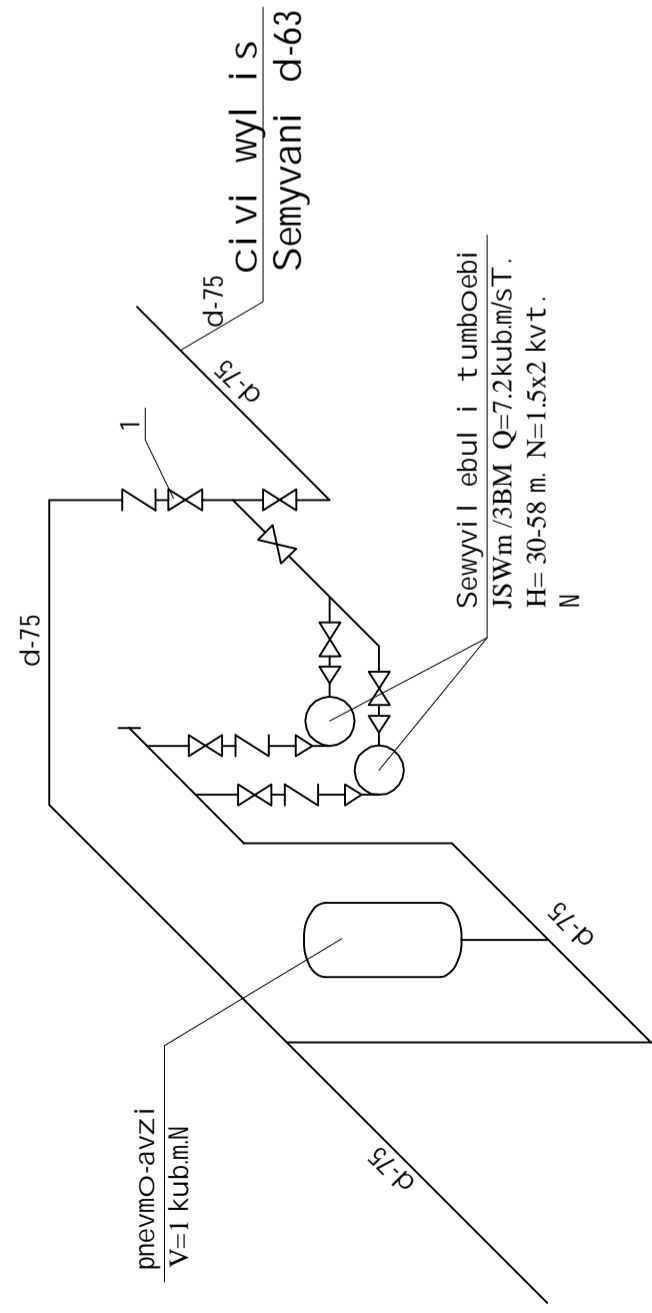
Seni Svna: mil ebi s da dgarebi s di ametrebi i xile aqsonometriul sqenebze.

Tanadecoba	guar'i	xol nowara	TariBi	q. gori, cxinval is qzadkeci li #14	stadi a	Furc. i	Formati
di reet ori	b. dgebuaze			yo fil i savadmo Fos Senobis	mp.	wk-6	A 2
arqi Teqt ori	e. oseraj Swi li			rekonstruaci a sacxovrebel saxi ad	pasStabi		
dnamuSava	aj afarasvili			meOTxe sarTul is			
Saxowma	gCxelZe			saproeqto gegma "wk"-qsel is	1:200		b.d. j gufi
				datani T			

# Civi wyl is qsel is sqema



## sat umbos mowyobis sqema



## gamarteba

vinidan magistral ur qsel Si araa sakmarisi wneva Senobis normal uri wyal momaragebi sTvis. amitom sawiro Seiqla wnevis gazrda tumboebis gamoyenebiT. sqema mowyobilia Semdegnairad. wyalimi ewodeba Sewvili ebul tumboebis, Senobisi mcire xarjis SemTxvevasi musacobs erTi tumbo, romelic wyalis awdis iqve gantavsebul pnevmo-avzs, xarjis momatebis SemTxvevasi irTveba meore tumbo. am dros wyalimi ewodeba, rogorc momxmarebel s aseve pnevmo-avzs, mis Sevshebi SemTxvevasi imatebs massi wneva da rodesac is mi arwevs 0.5 MPa- tumboebi iTiSebian da wyalimi momxmarebel s mi ewodeba pnevmo-avzSi narCeni wneviT. avzSi wyl is raodenobis SencirebasTan erTad iki ebs massi wnevac, rodesac wneva daecema 0.25 MPa-mde wnevis rel e gadascems sigals da CairTveba erTi tumbo.

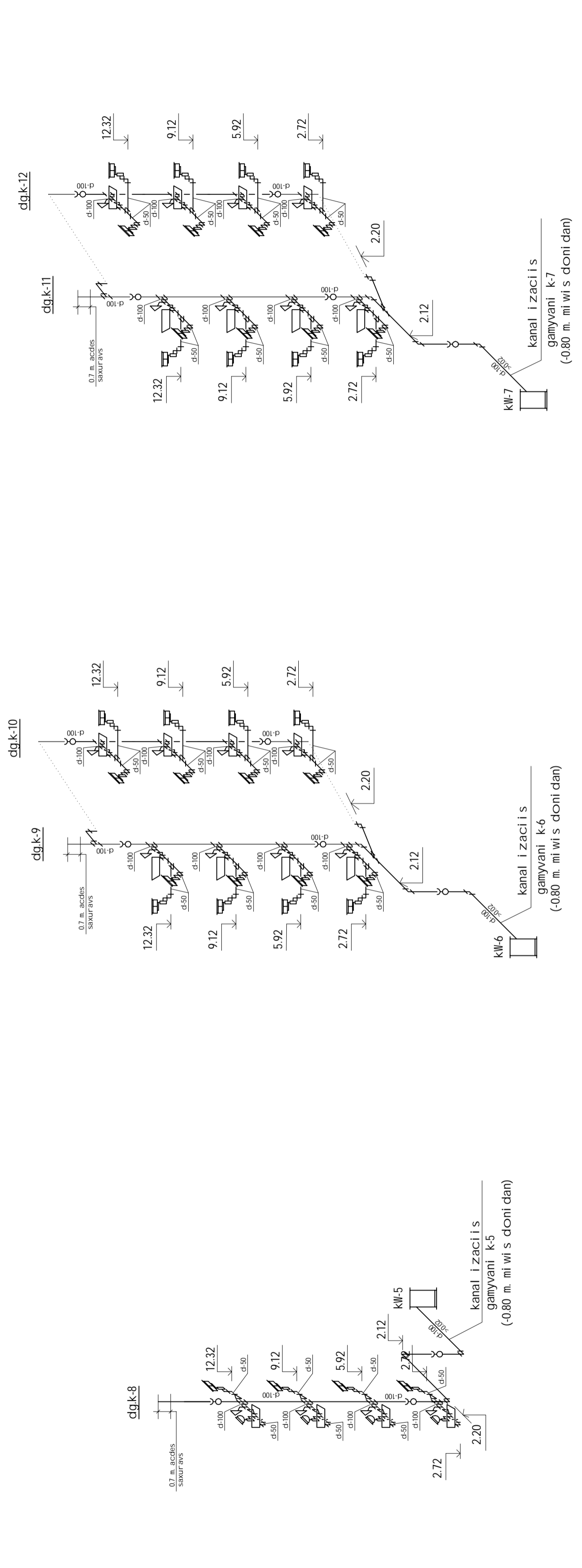
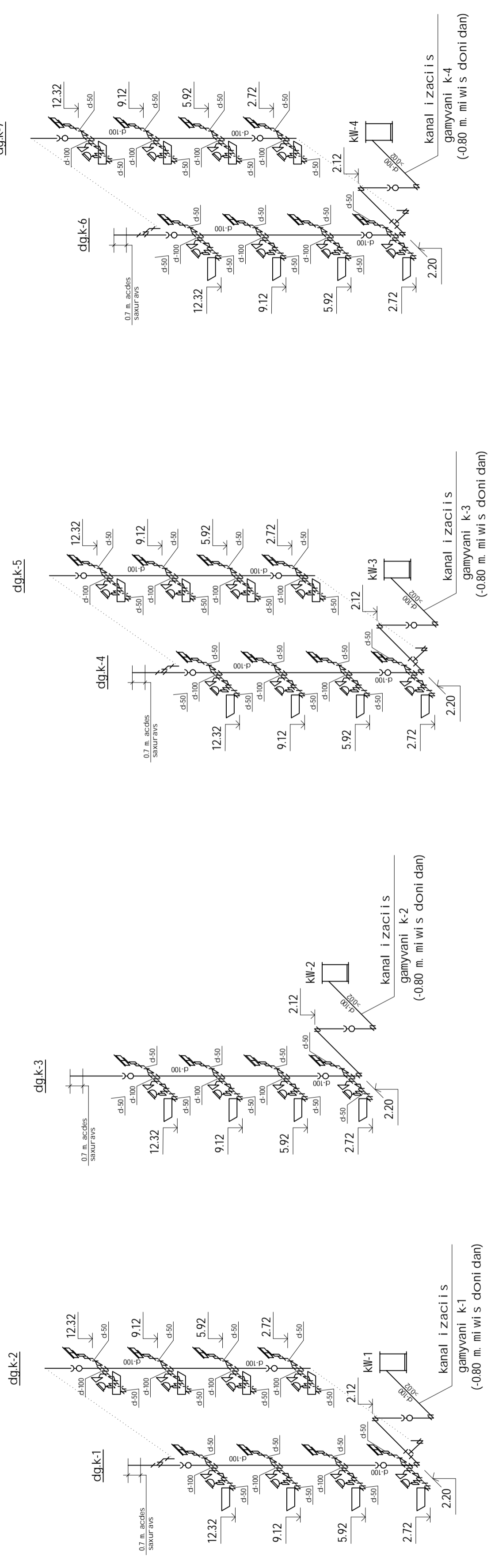
tumbos CarTva-gamorTvis proeტი unda ganxorciel des avtomatikis speci al istebis mer, arsebul i gamartebiTi baratis mi xedviT.

Tu SemTxveviT Sewydeba denis mi wodeba, maSin mi denze unda gaxsnas #1 ventili da wyal i, tumboebis gverdis avliT mi ewodeba qsel s im sarTul ande, sadamde uzrunvel yofs wneva qal aqis qsel Si. el energiis mi wodebasTan erTad, i keteba #1 ventili i da sistema i musavebs Cveul ebriv reJimsi.

Tamadoba	guri	xel nowara	TariBi	q. gori, cxival is qzadecili #14	Formati
dirct ori	b. dgbuaze			yofili i savadmoTos Senobis	Furc.
lari Teqtori	e. csefaliSwili			rekonstrucia sacxovrebel saxi ad	mp.
damusava	aj. afarasvili				wk-7
Saxonma	g. xelZe				pasTabi
				Civi wyl is qsel is sqema	b.d. j gufi



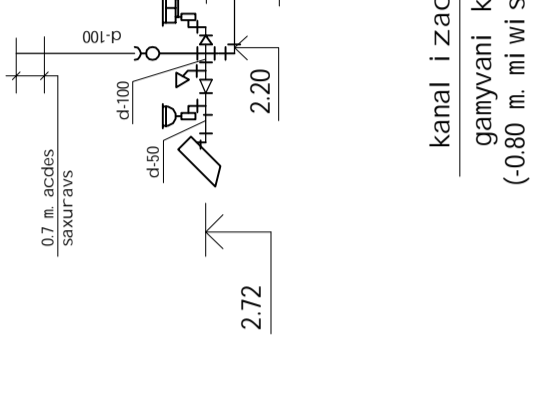
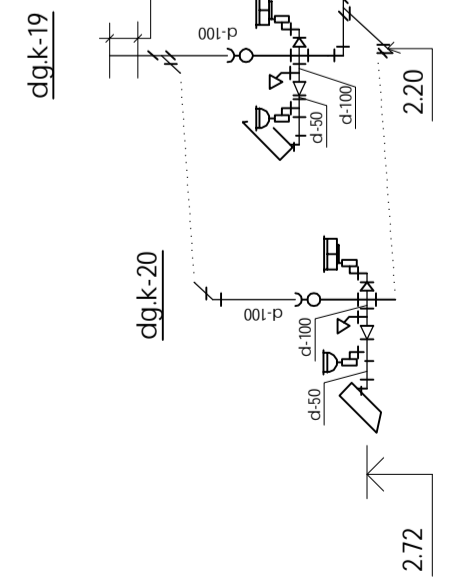
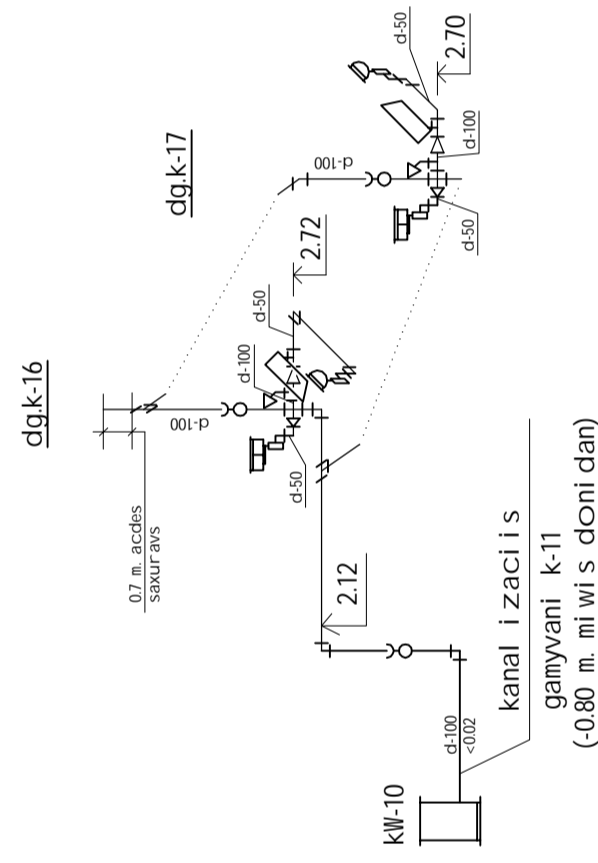
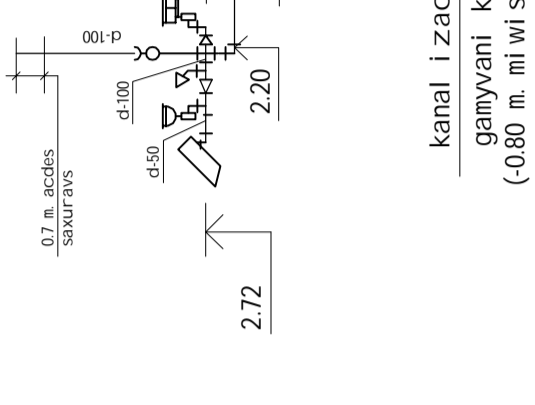
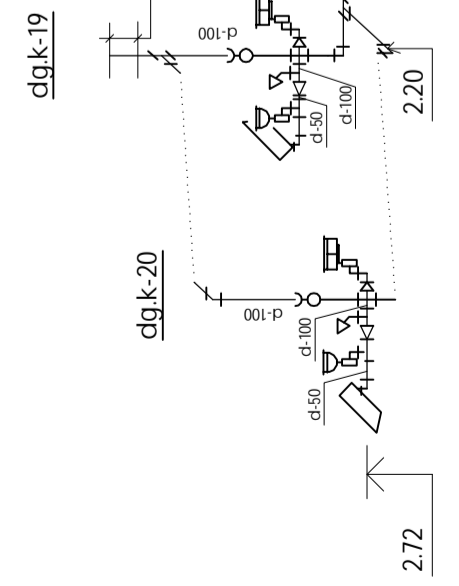
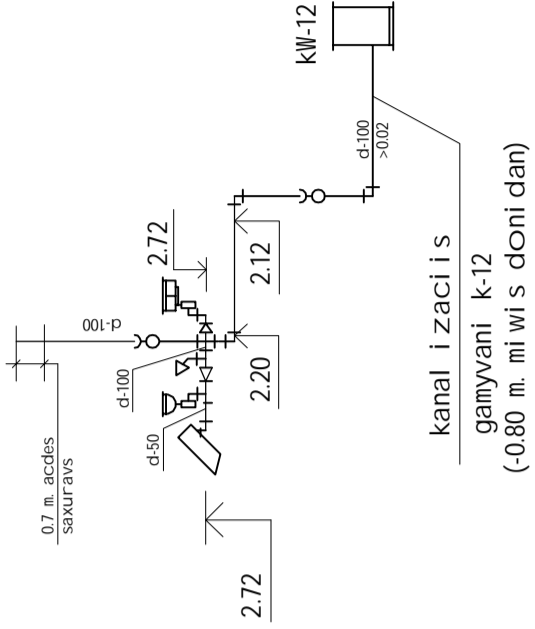
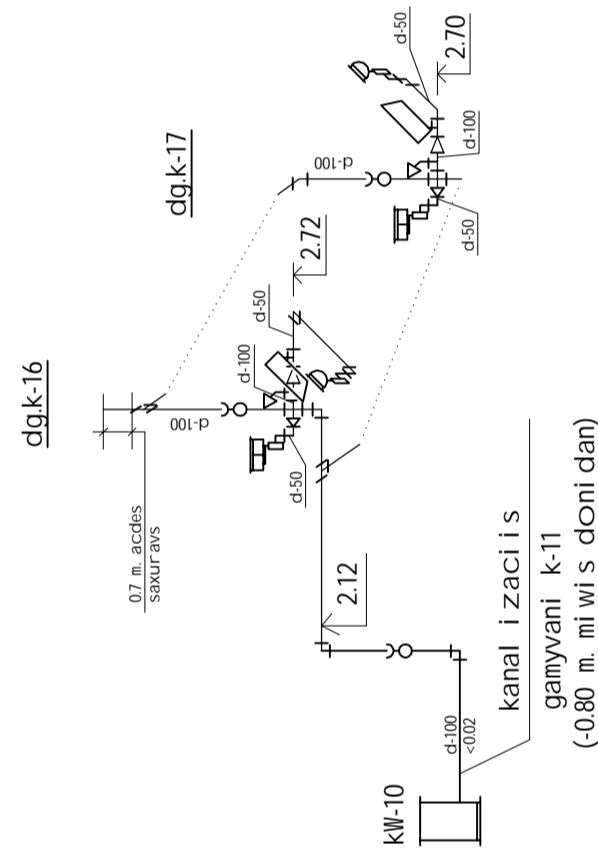
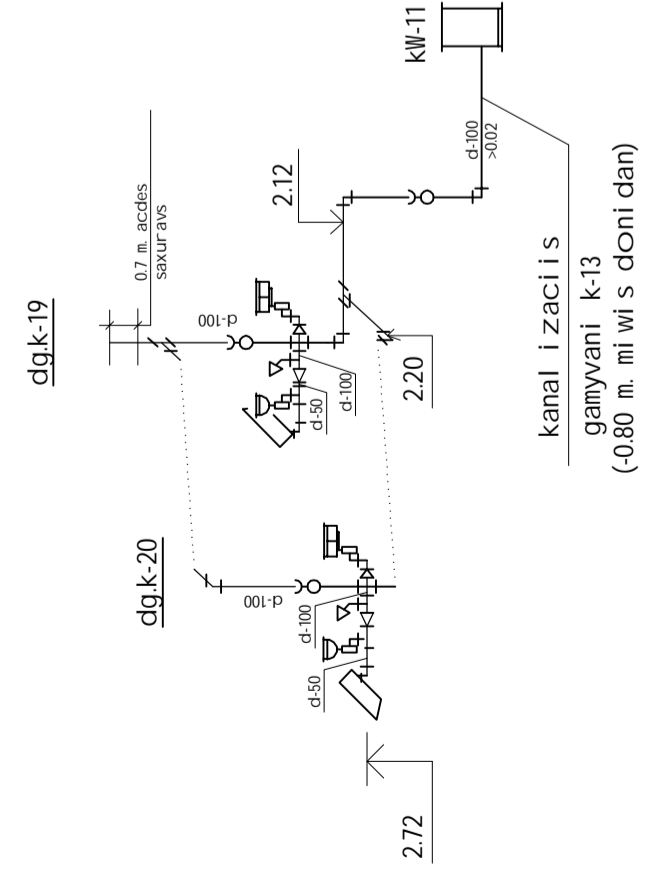
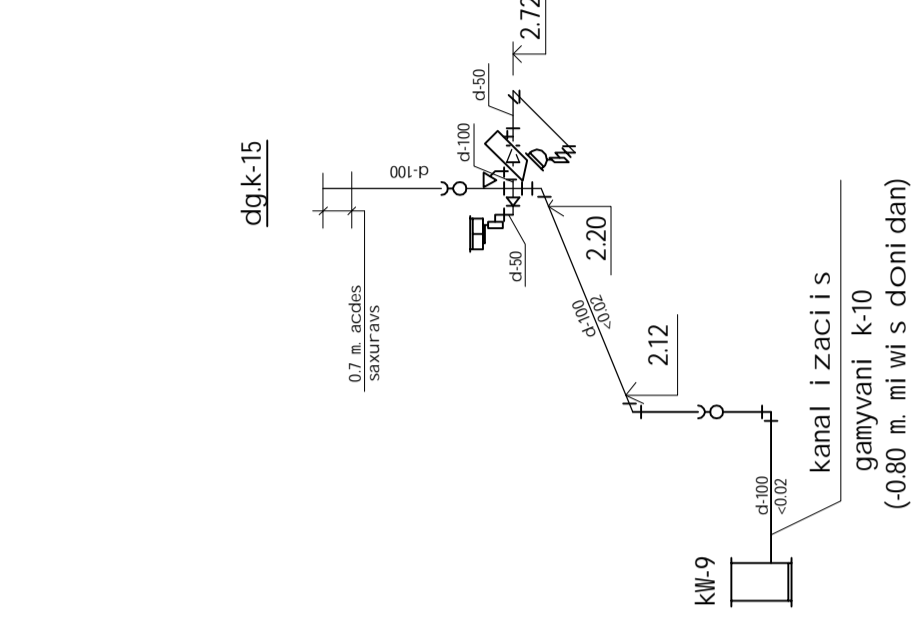
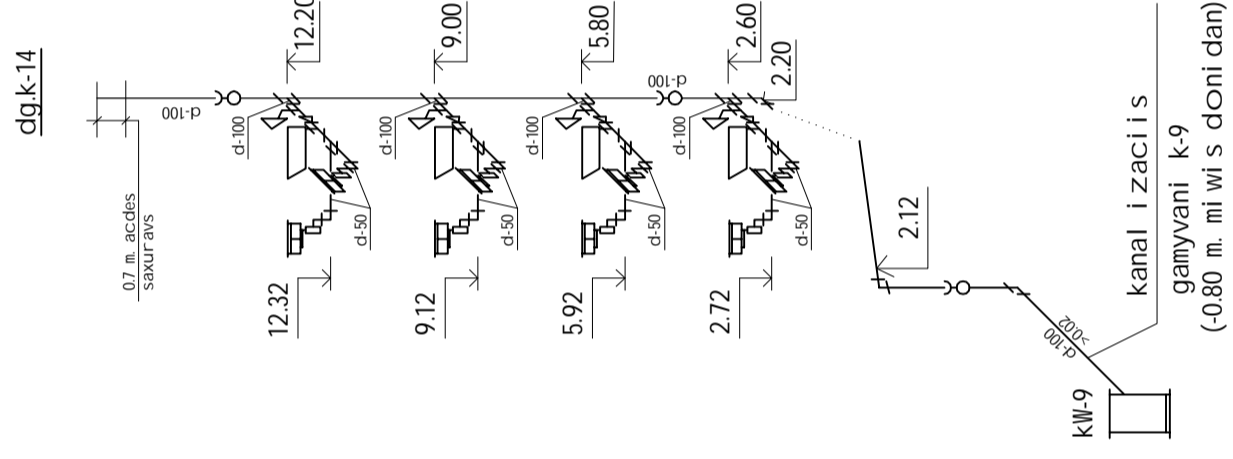
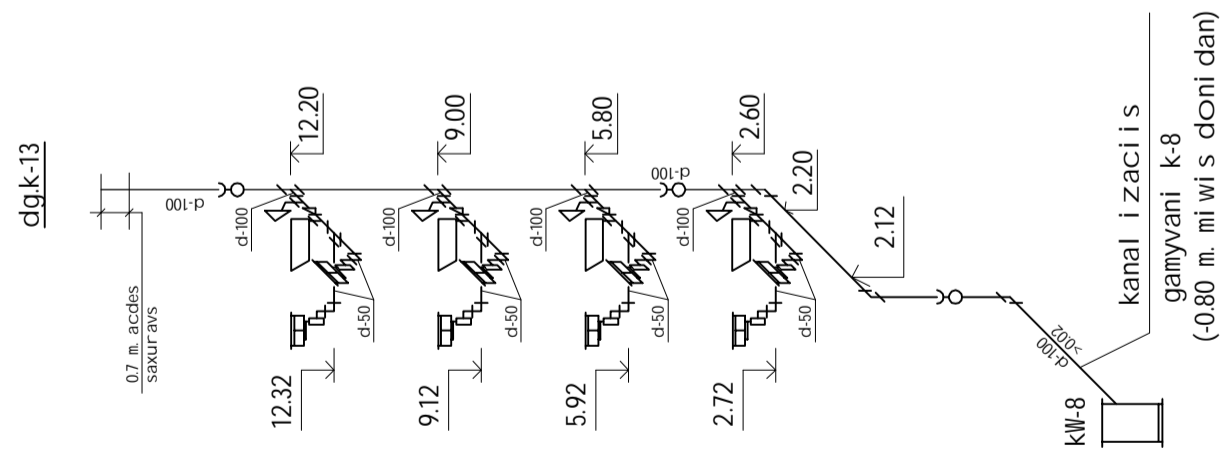
kanal i zaci i s sqemebi



Tanadzeoba	guri	kol mowara	TariBi	stadi a	Formati
dir et ori	b. dgebuaze			mp.	WK-8
lari Teqt ori	e. oseraSwi i				A 2
damaSava	aj. afaraswi i				
Saawama	g. xelTze				
				pasT abi	
					kanal i zaci i s sqemebi
					b.d. j gufi

q. gori, cxival i s qzadkeci i #14  
 yofii i saavadyofos Senobis  
 rekonstruci a sacxovrebel saxi ad

kanal i zaci i s sqemebi



Transkribacia	guri	soil nowera	Tari Ri	q. gori, cxival i s qzadkeci i #14	Formati
dir et cor i	b. dgebuze			yo fi l i spaavmy of os Senob i s	stadi a
lar gi Teq t cor i	e. oser a i Sw i i			rekonst ruqci a sacovrebel saxi ad	m.p.
damuSava	aj af ar a Sw i i				wk-9
Sanowma	g.Cxet i Ze				A 2
					pasST abi
					kanal i zaci i s sqemebi
					b.d. j gufi

